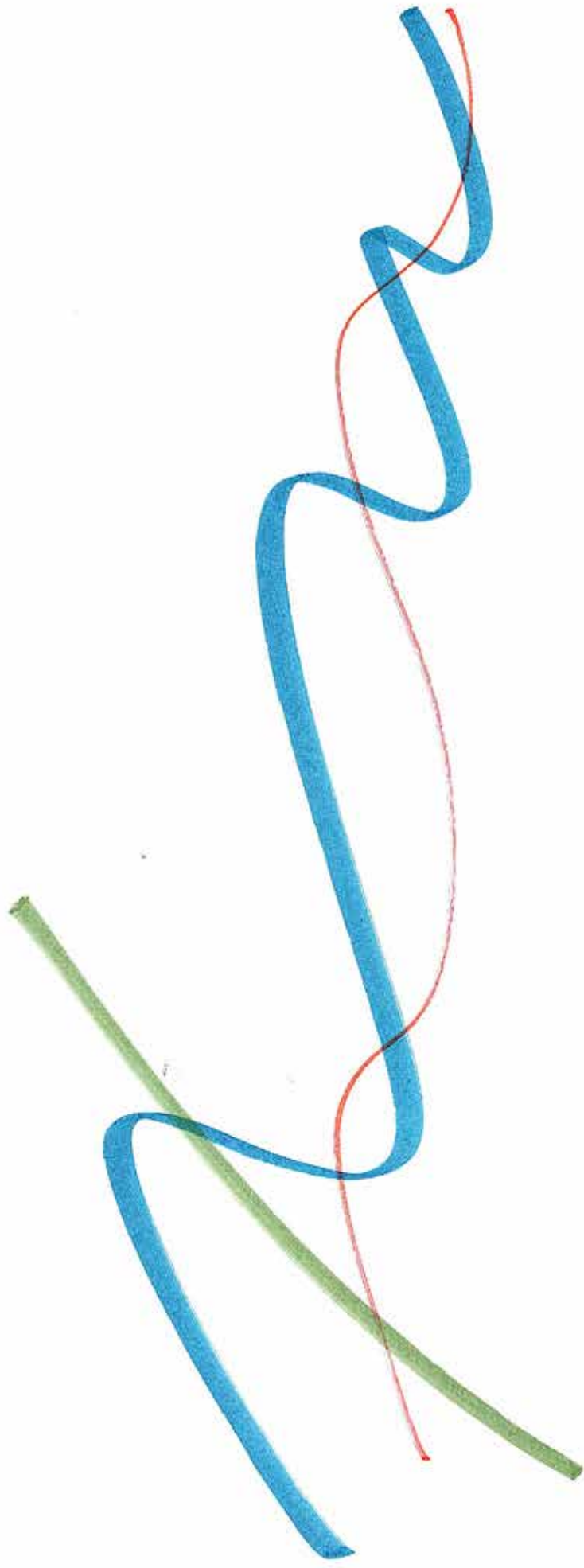


Allée des Amériques

Étude de faisabilité





Développement Économique et Foncier d'Investissements d'Avenir

Allée des Amériques

Aménagement d'un jardin-place

Calebassier, Lamentin, Martinique

Étude de faisabilité

23 octobre 2023



Claude Yacoub & Nivine Ibeche
Architectes



Mobile FR : +33 6 31 17 78 95
Mobile US : +1 832 946 3635 (WhatsApp)
claude.yacoub@gmail.com
www.claudeyacoub.com



LE LAMENTIN
Ville future



DHA
ARCHITECTES URBANISTES

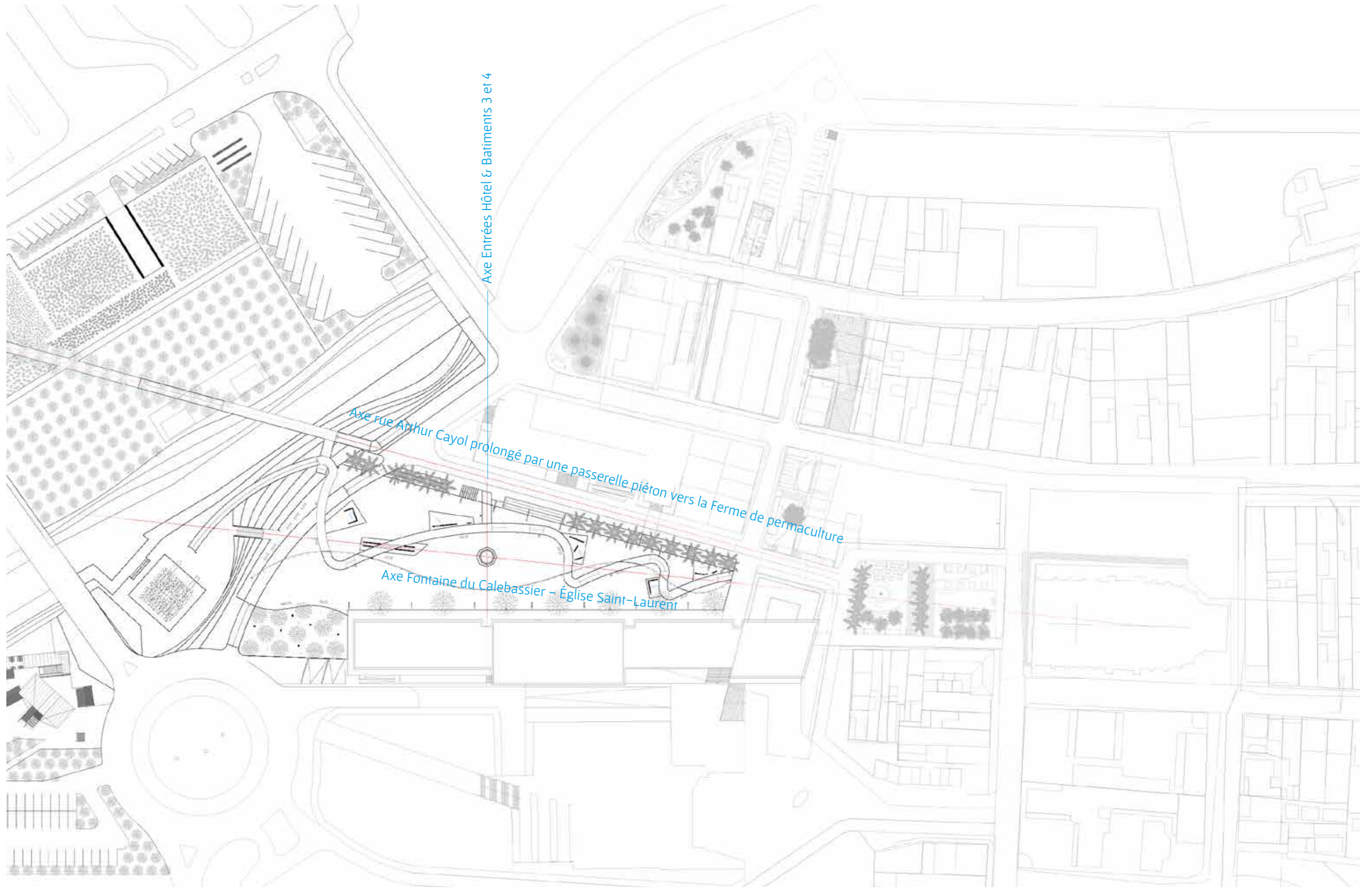


APUI Entrée de ville du Lamentin - Secteur III Le Calebassier - Martinique

PLAN MASSE

Date : 23/04/2021

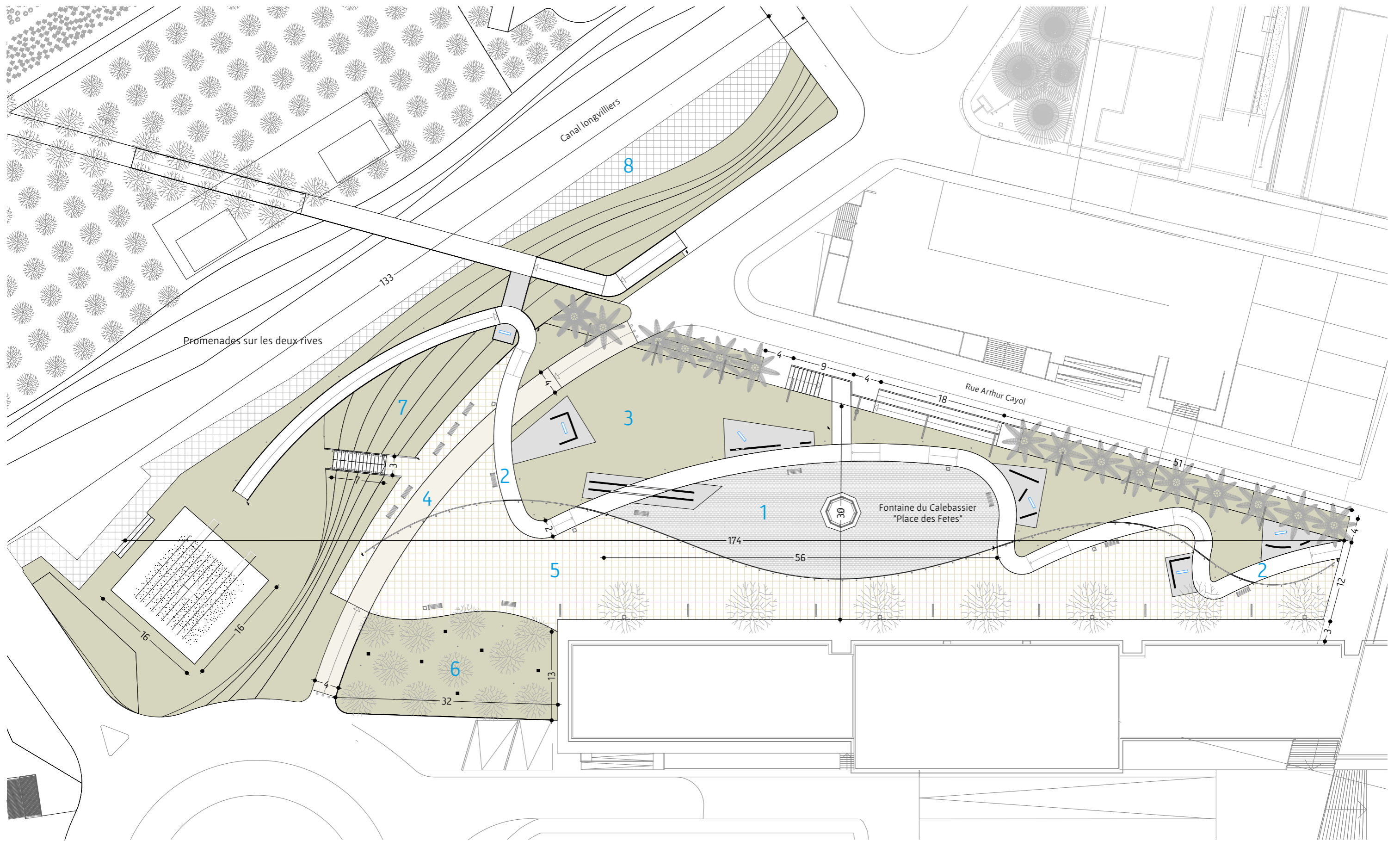
Ech : 1 : 1000



Axe Entrées Hôtel & Bâtiments 3 et 4

Axe rue Arthur Cayol prolongé par une passerelle piéton vers la Ferme de permaculture

Axe Fontaine du Calebassier - Église Saint-Laurent



- 1 – “Place des Fêtes” en pavé à l’ancienne autour de la Fontaine du Calebassier : 627 m²
- 2 – Cheminement courbe : 550 m²
- 3 – Gazon : 1 050 m²
- 4 – Voie de secours : 232 m²
- 5 – Gazon-béton : 1 540 m²

- 6 – Jardin des Calebassiers : 430 m²
- 7 – Amphithéâtre gazon : 1 975 m²
- 8 – Promenade sur berge : 490 m²

1:500



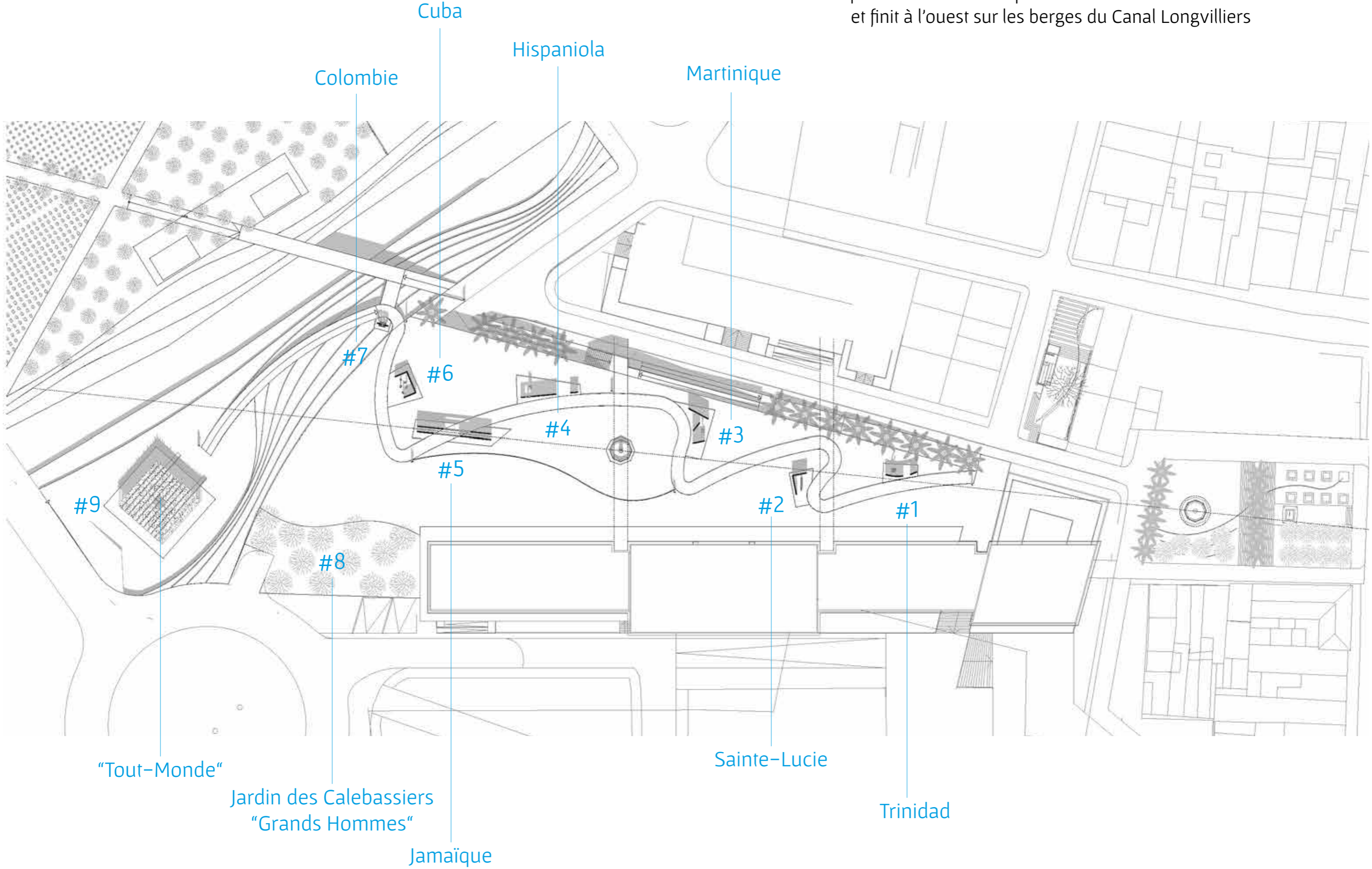


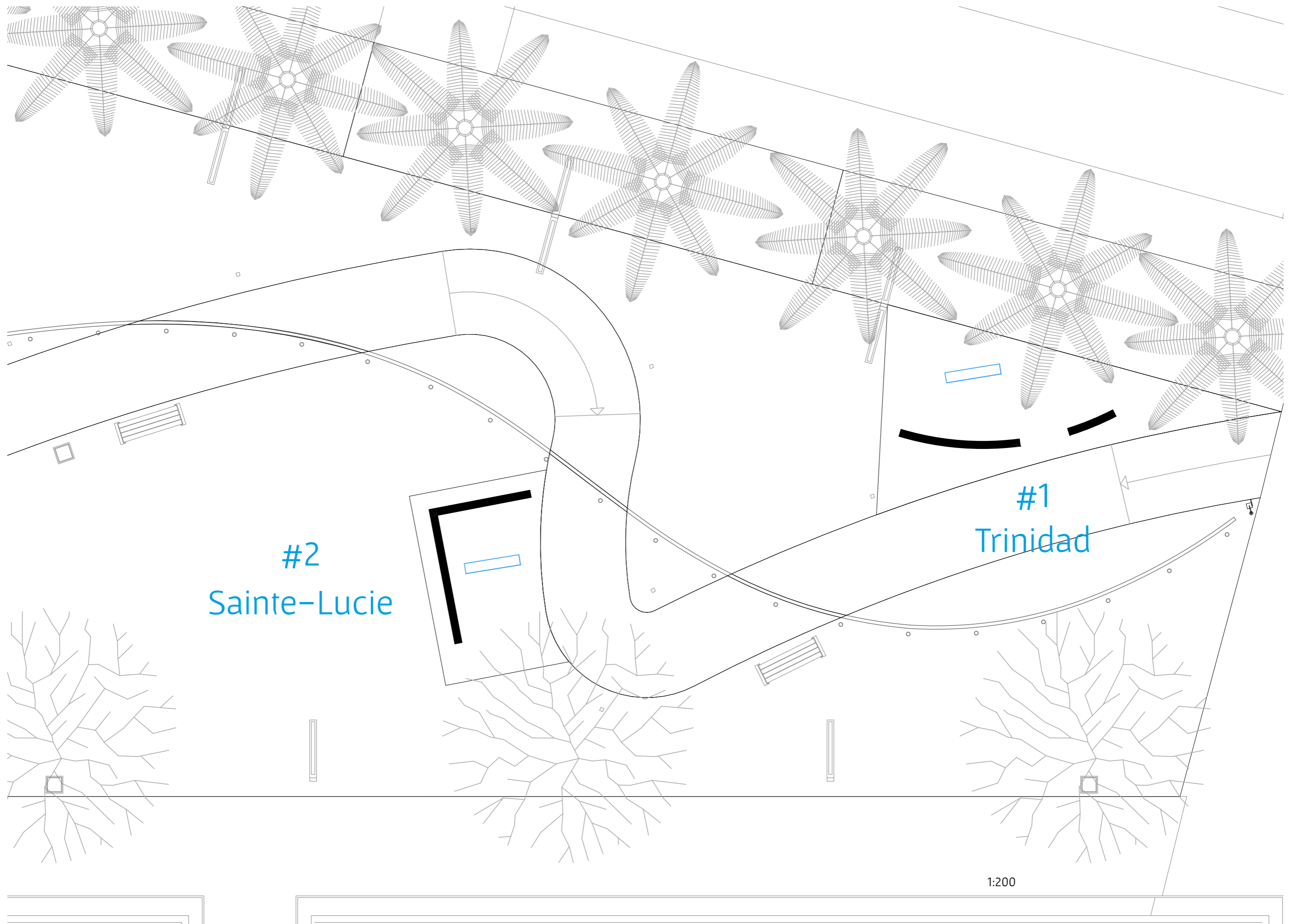






Invitation à des artistes des Amériques pour investir ce “serpent promenade”
qui commence à l’est par la Place des Communautés
et finit à l’ouest sur les berges du Canal Longvilliers

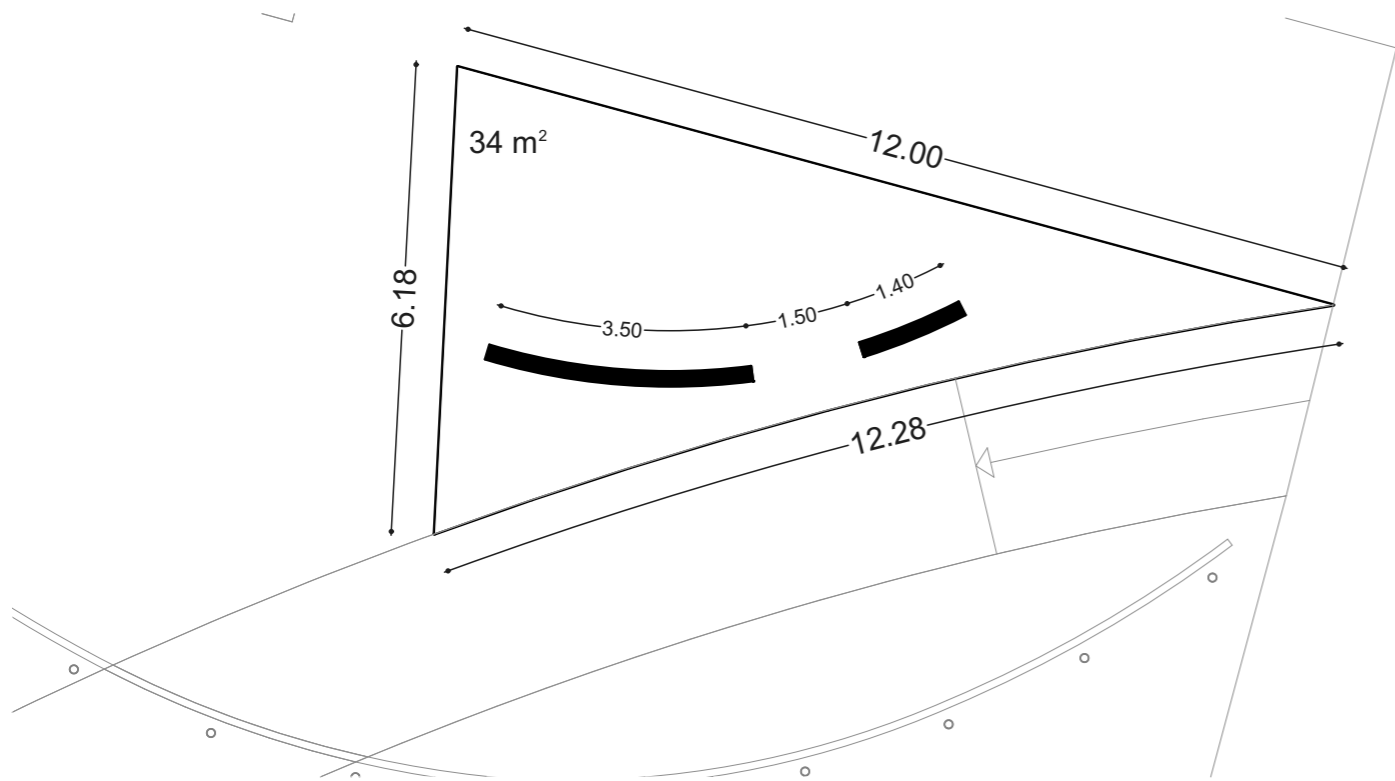
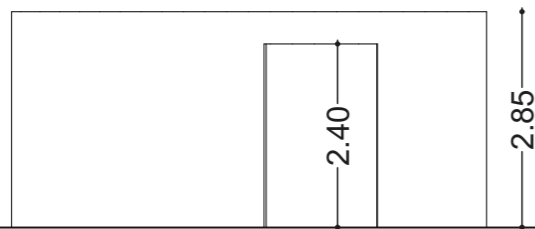
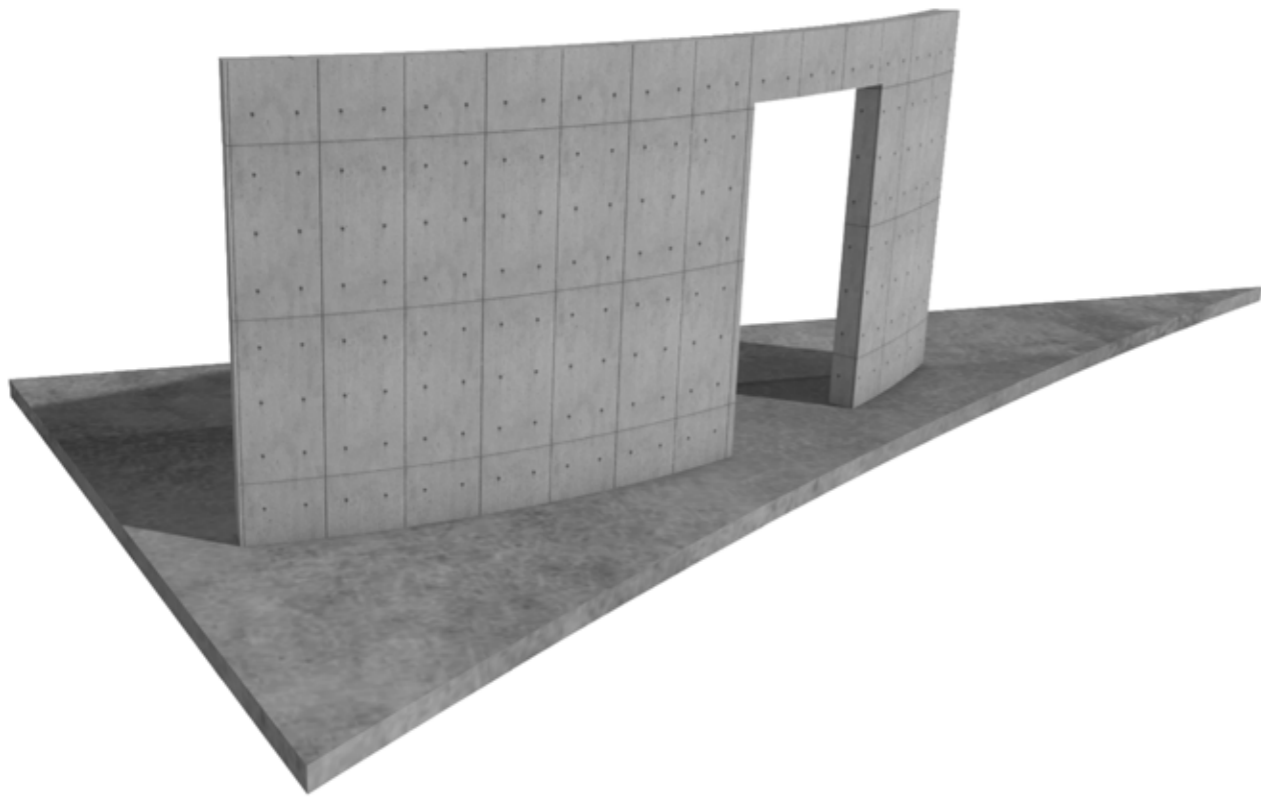




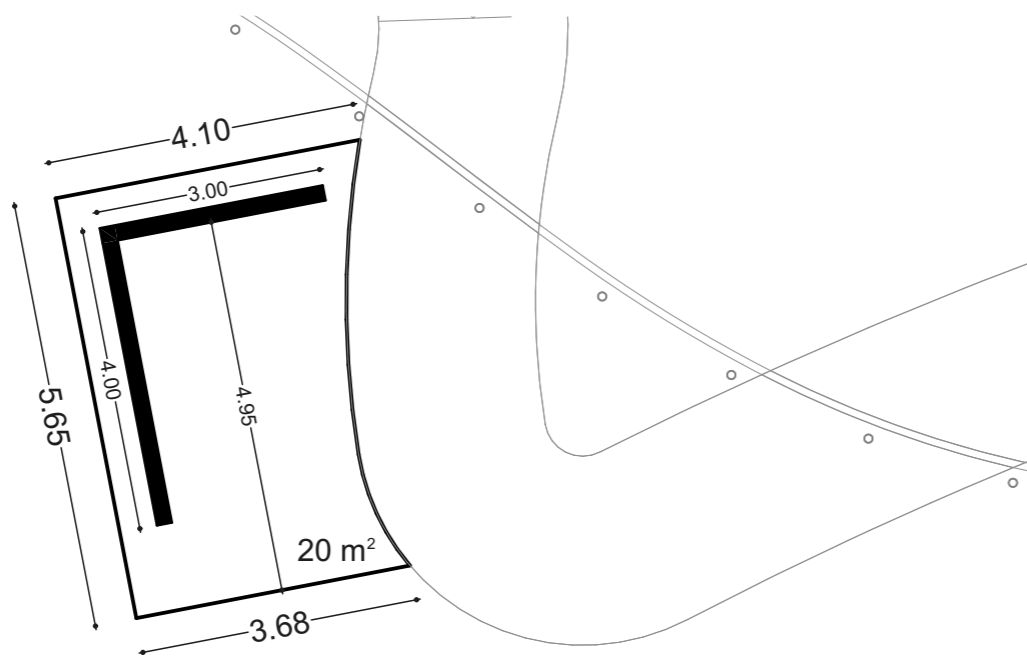
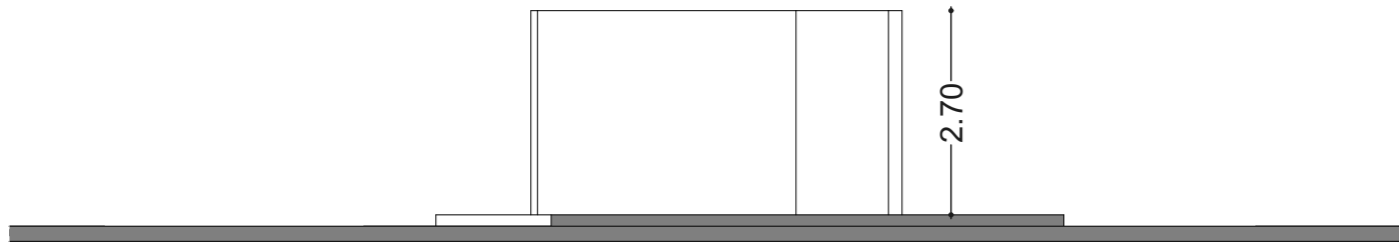
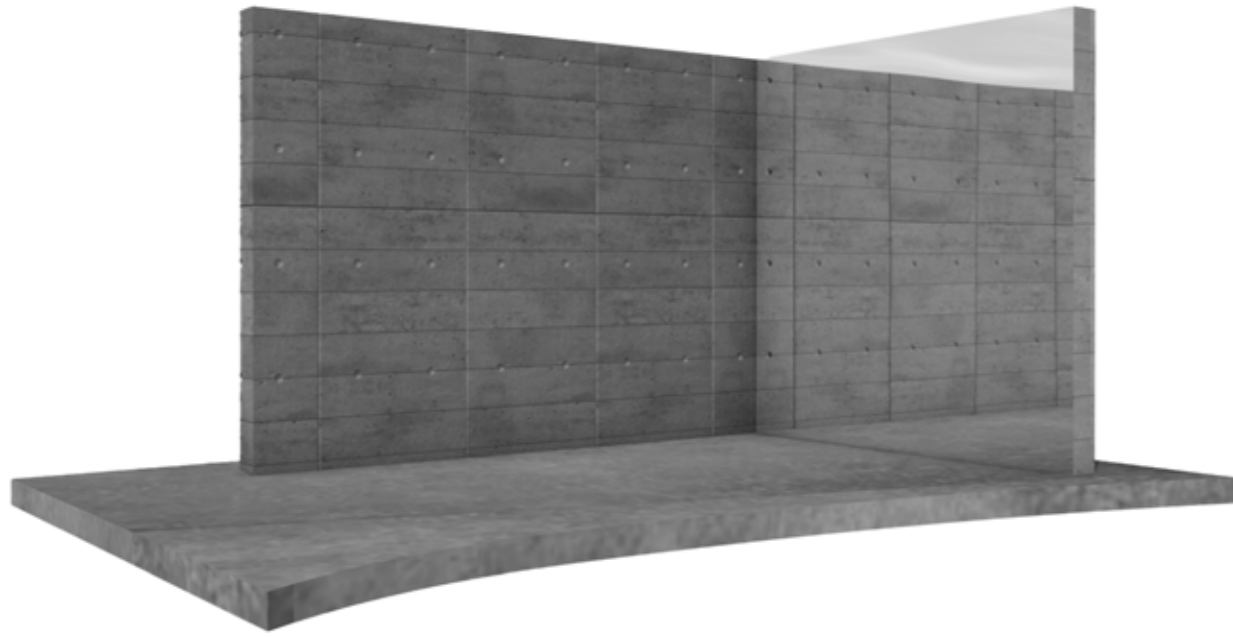
#2
Sainte-Lucie

#1
Trinidad

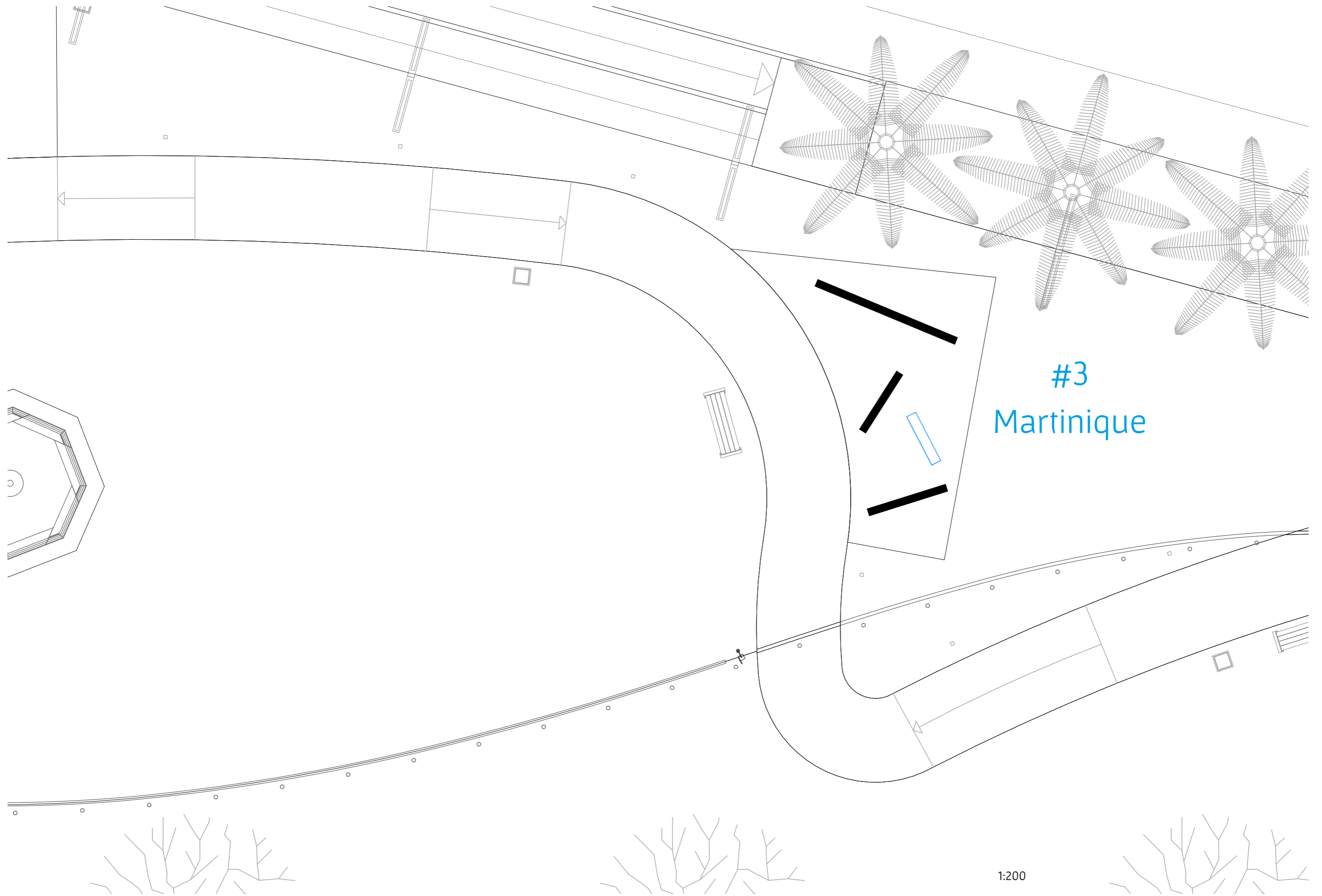
1:200



#1
Trinidad

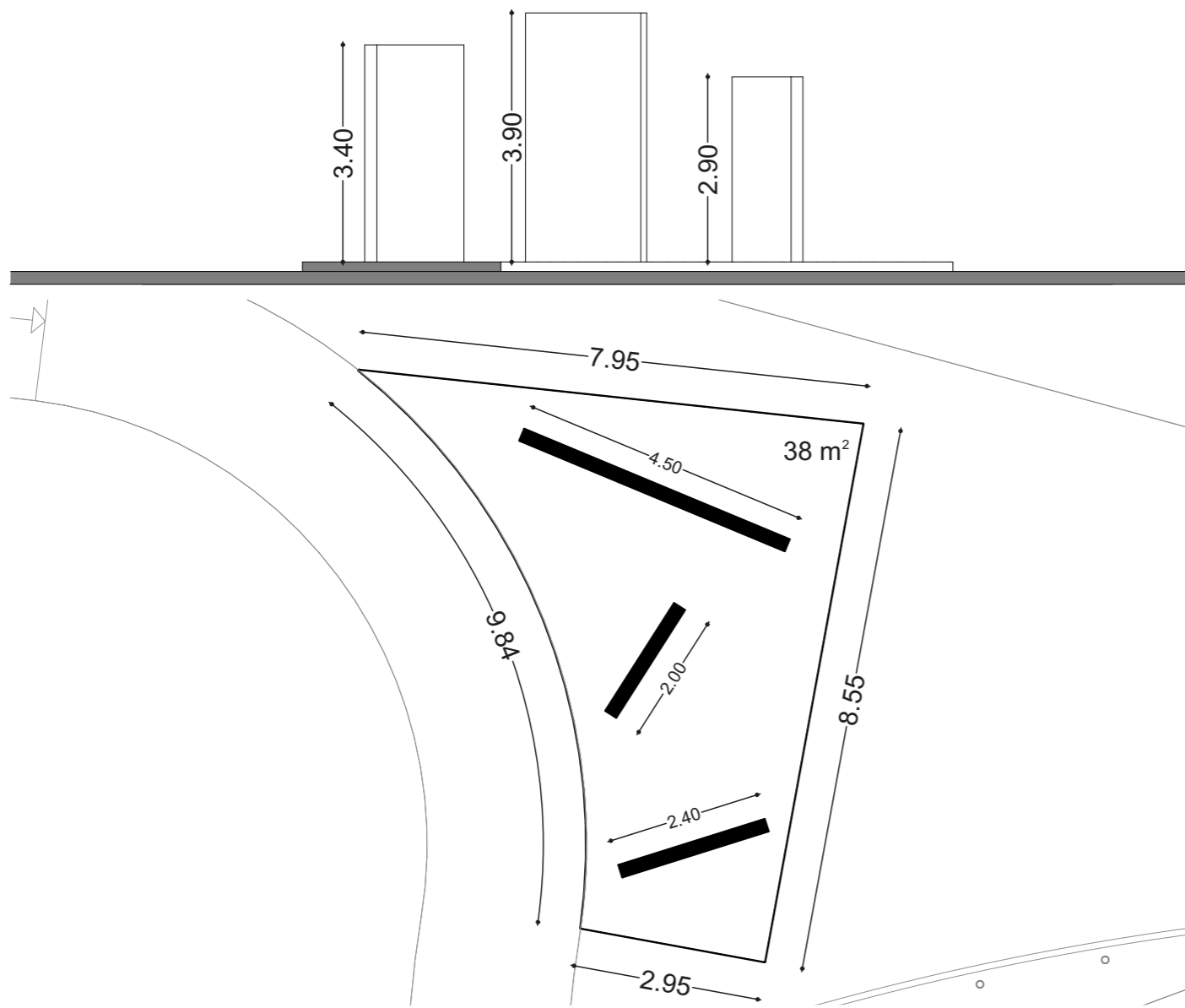
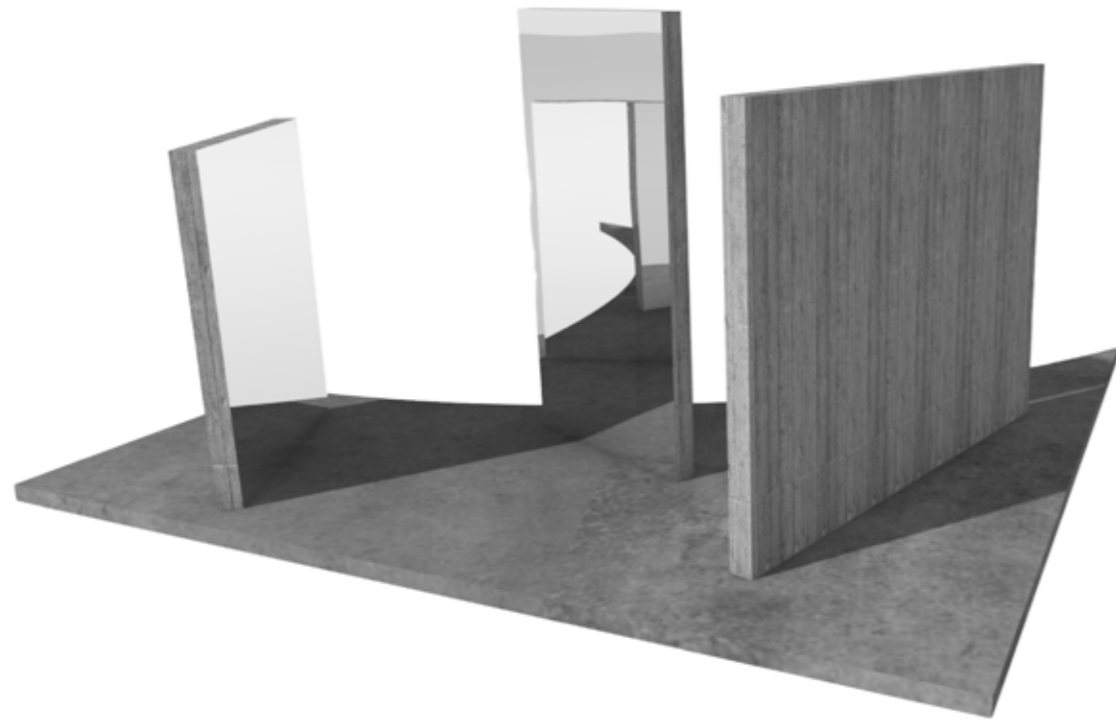


#2
Sainte-Lucie



#3
Martinique

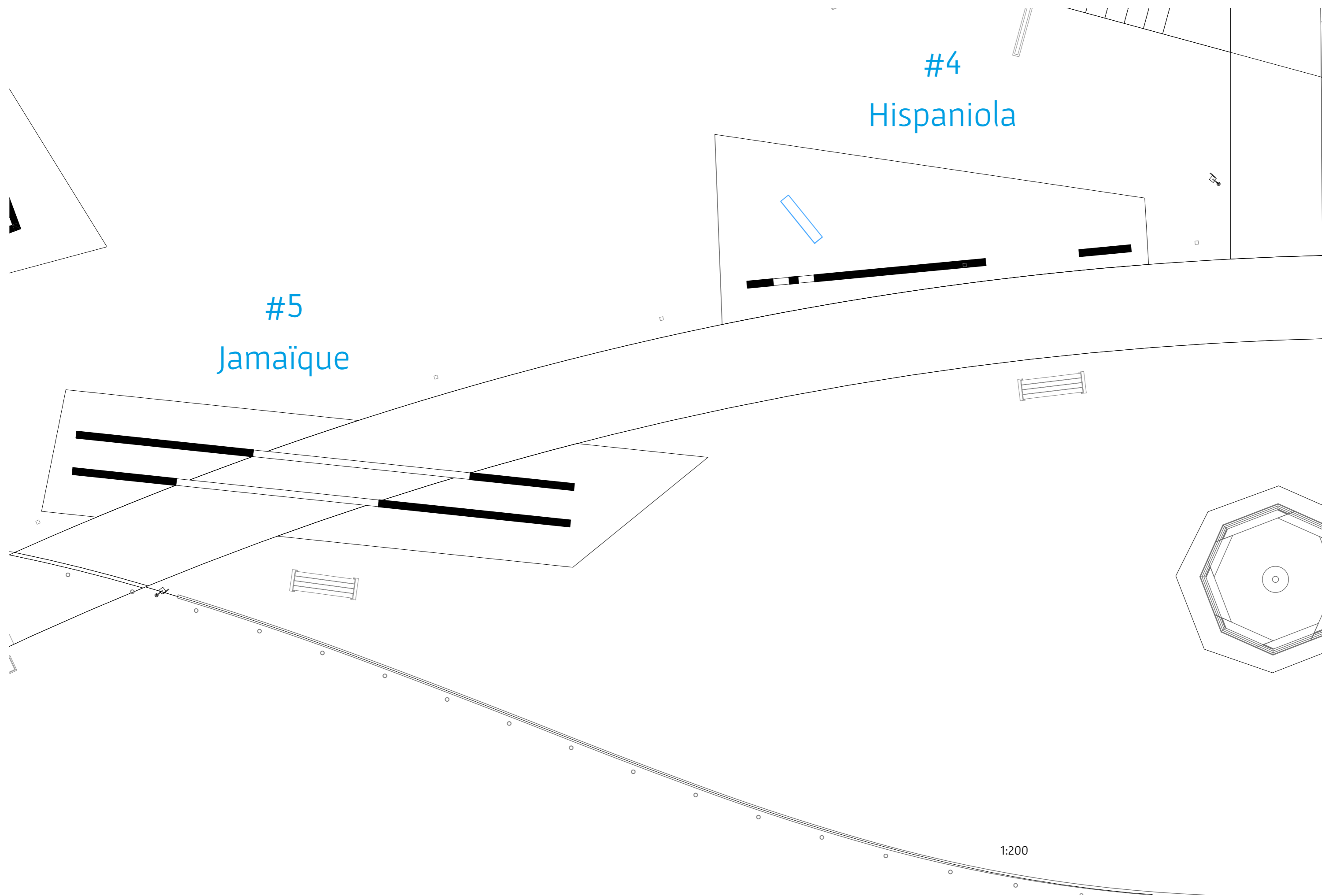
1:200

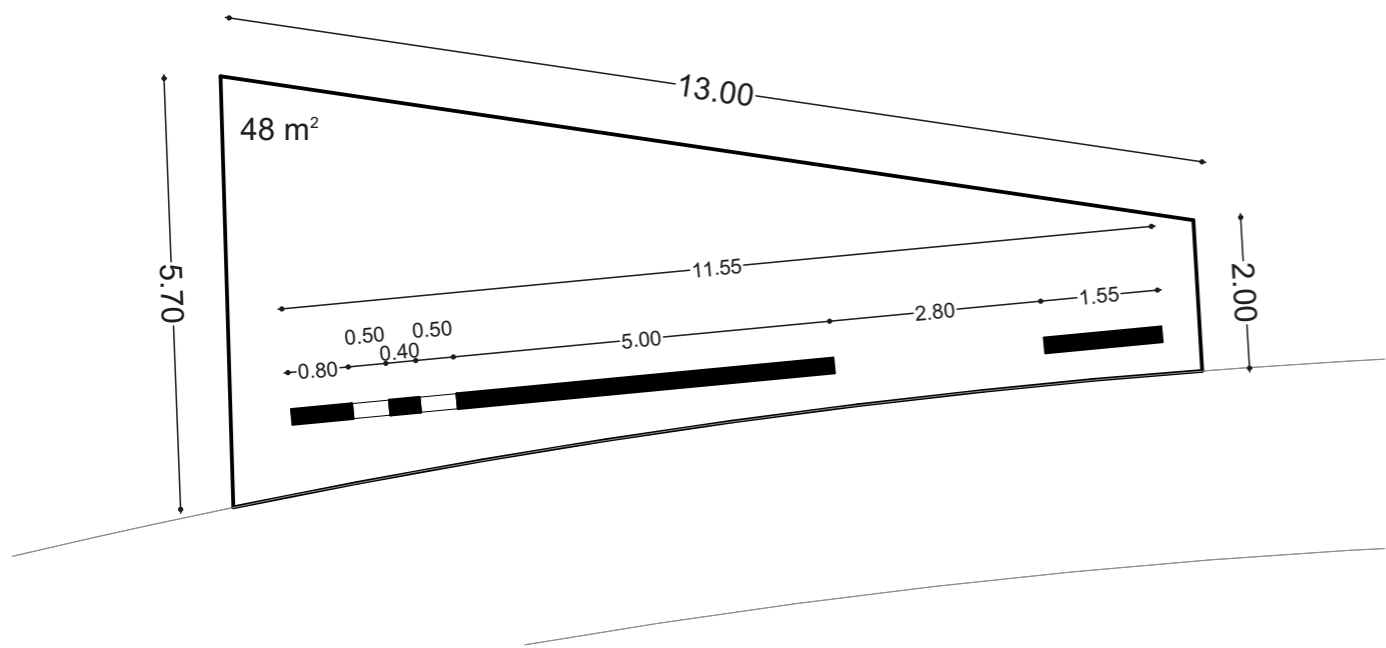
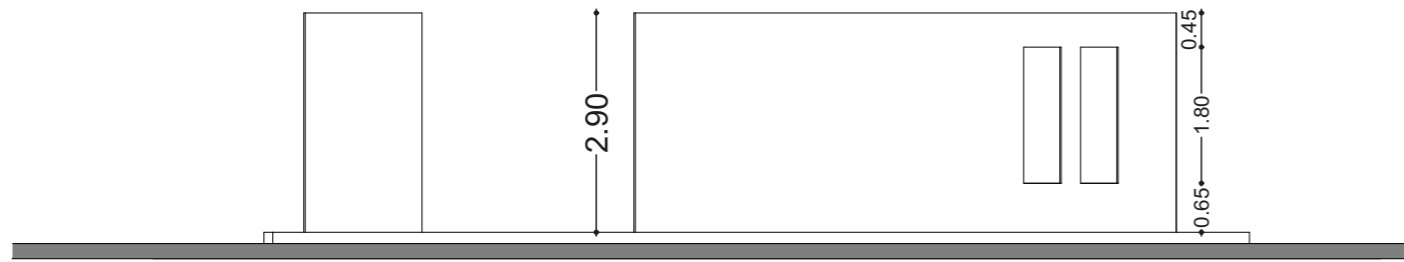
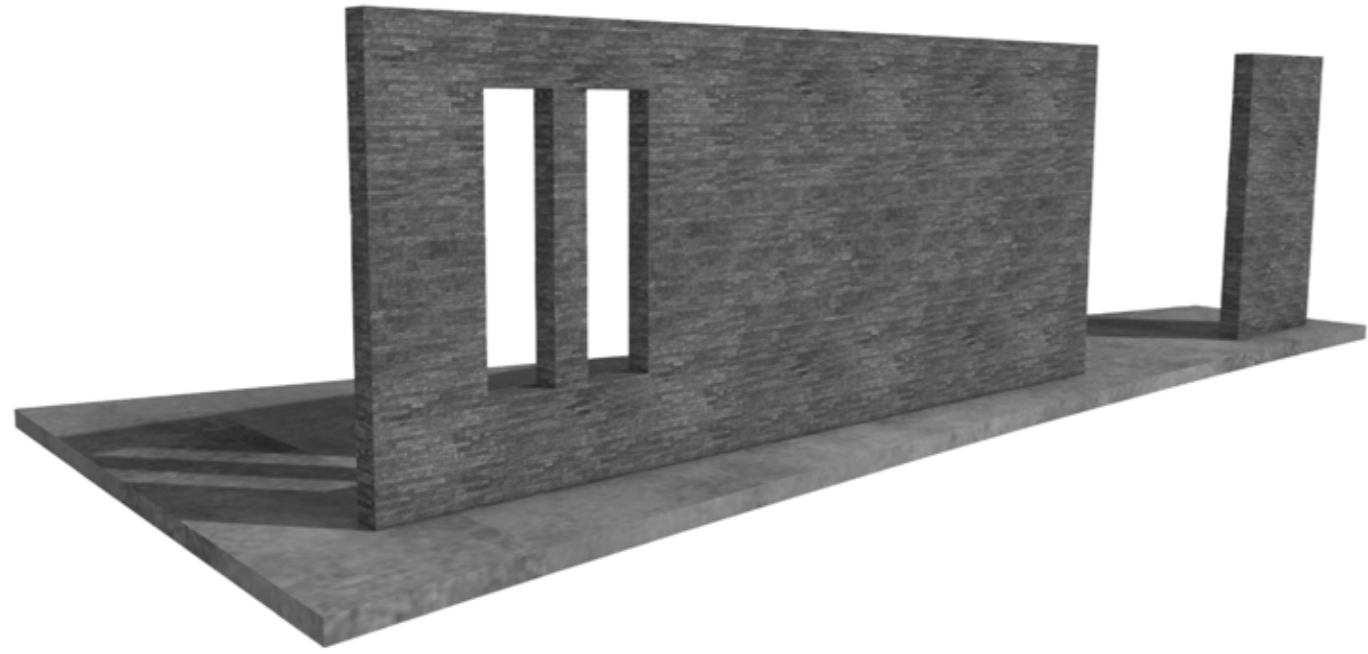


#3
Martinique

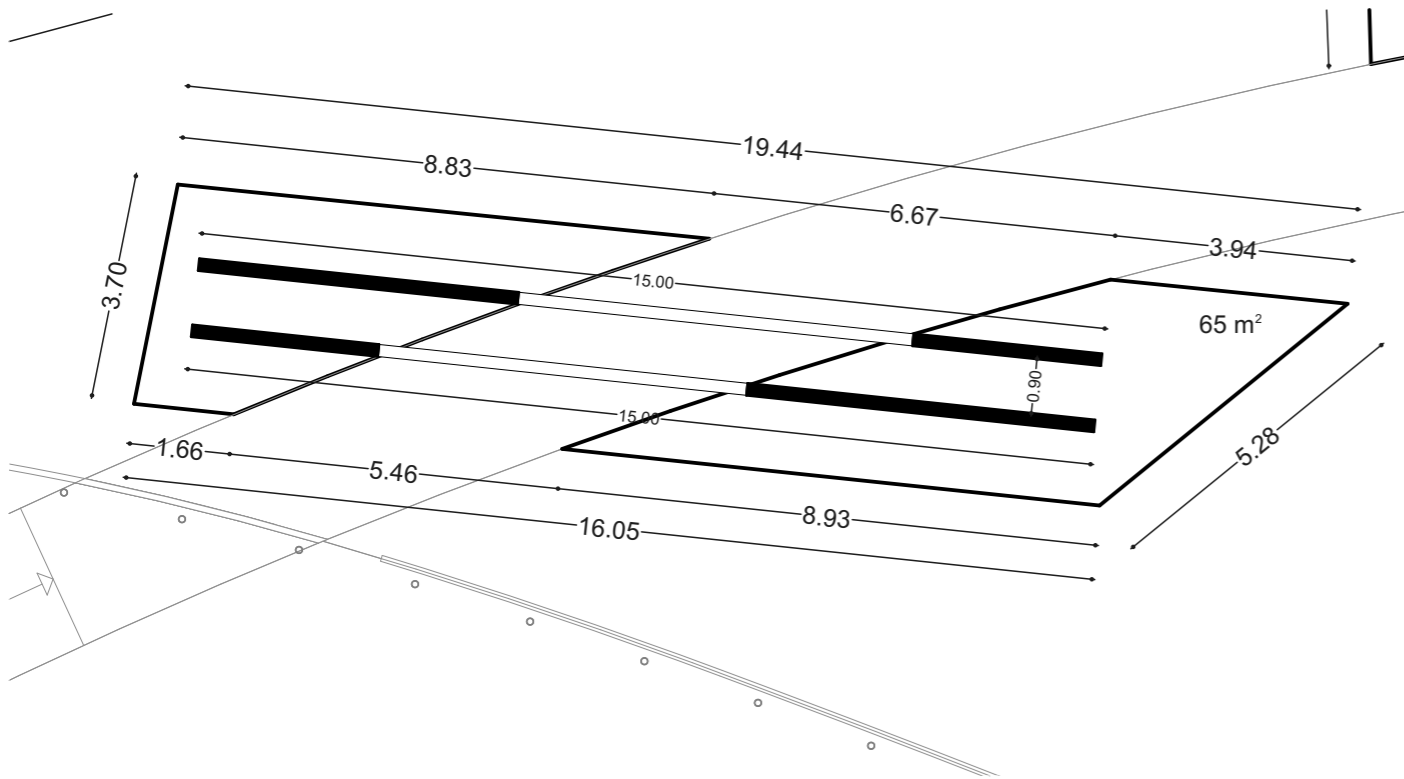
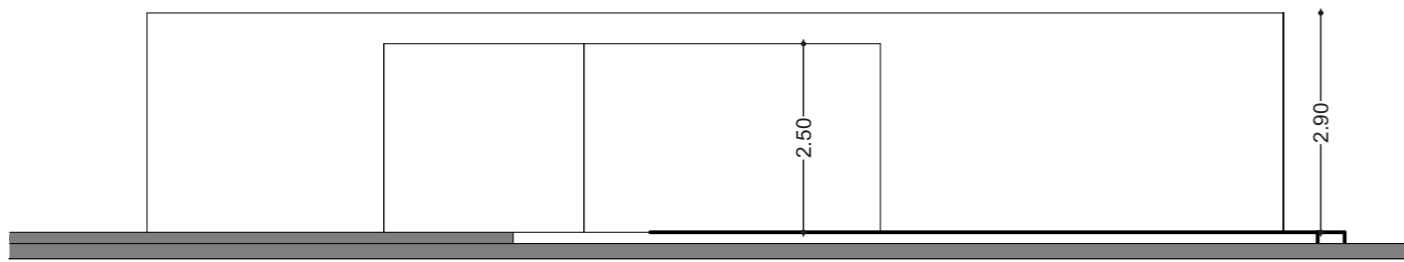
#4
Hispaniola

#5
Jamaïque

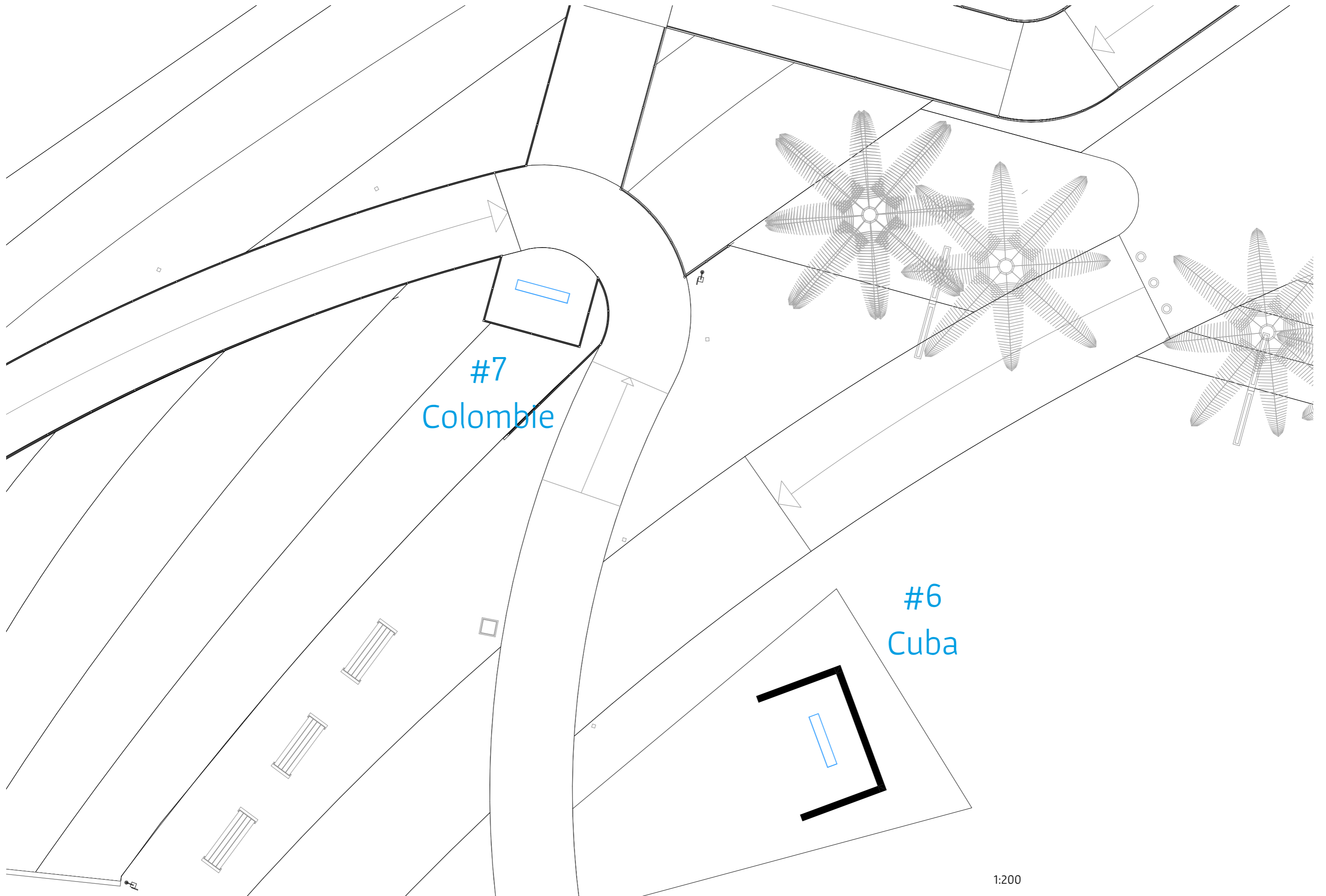




#4
Hispaniola



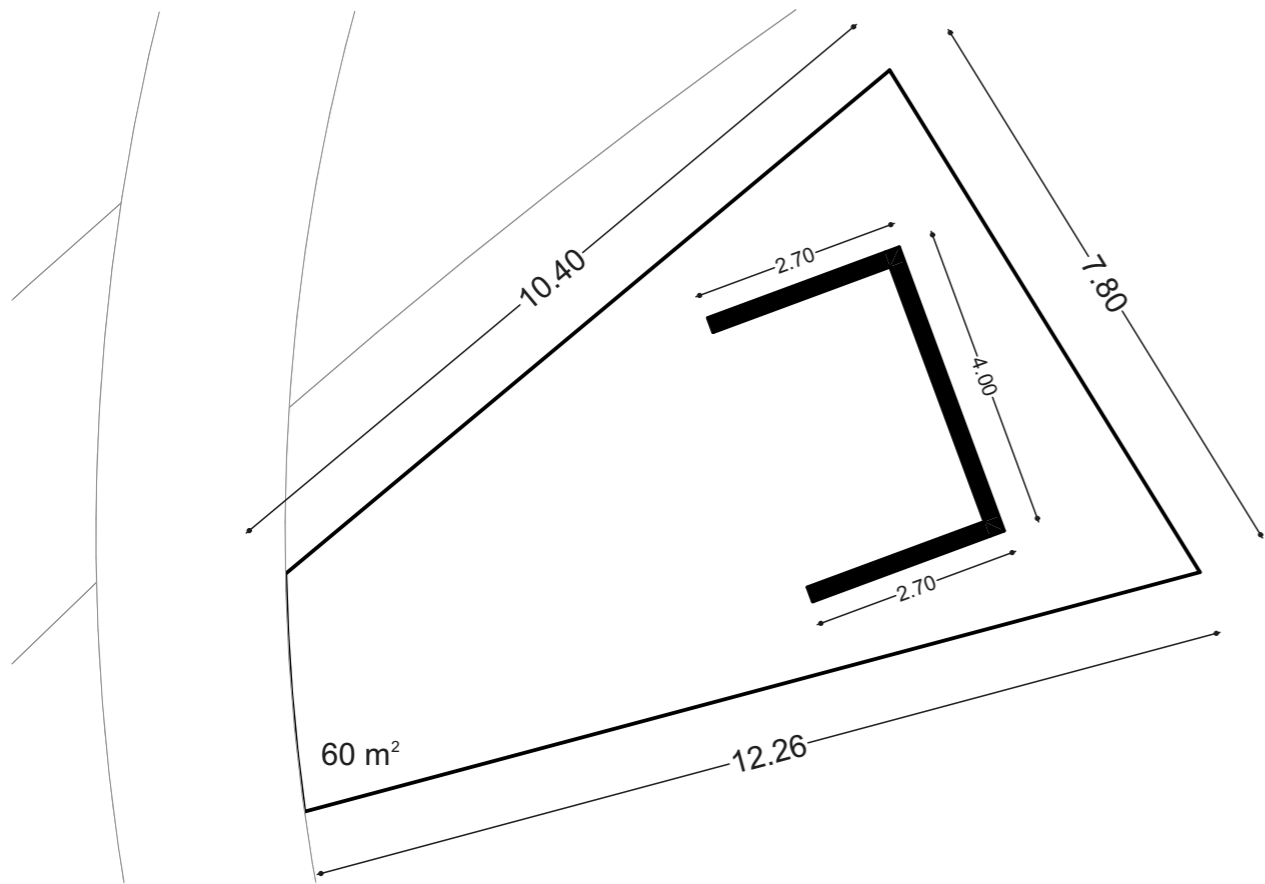
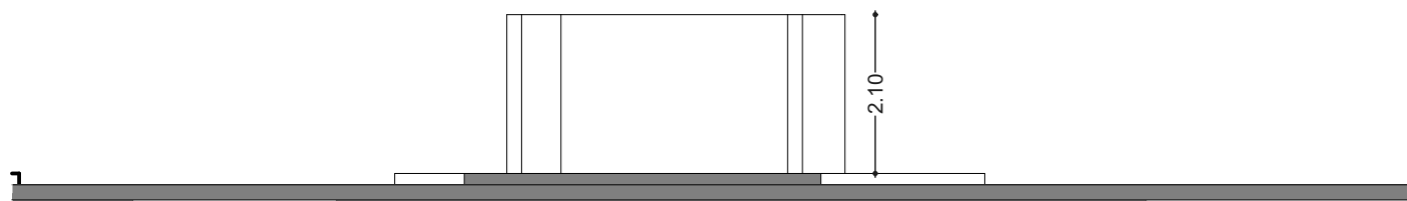
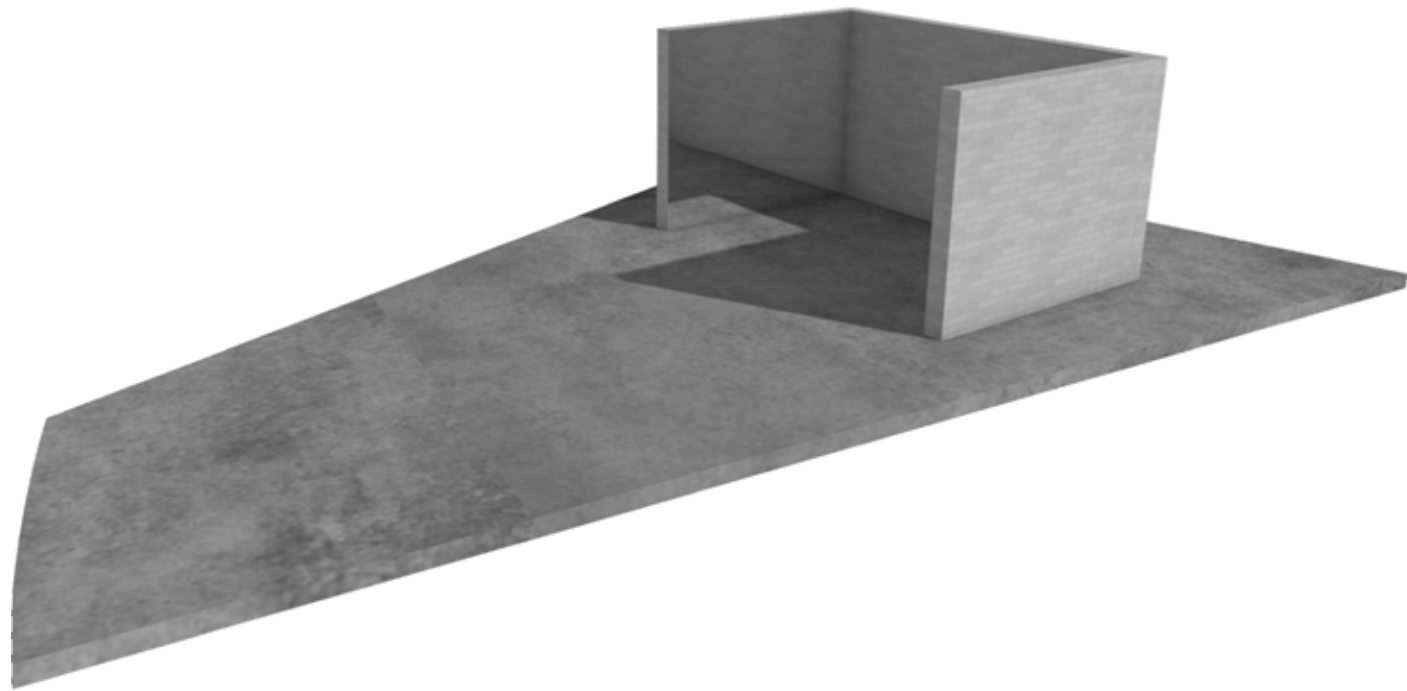
#5
Jamaïque



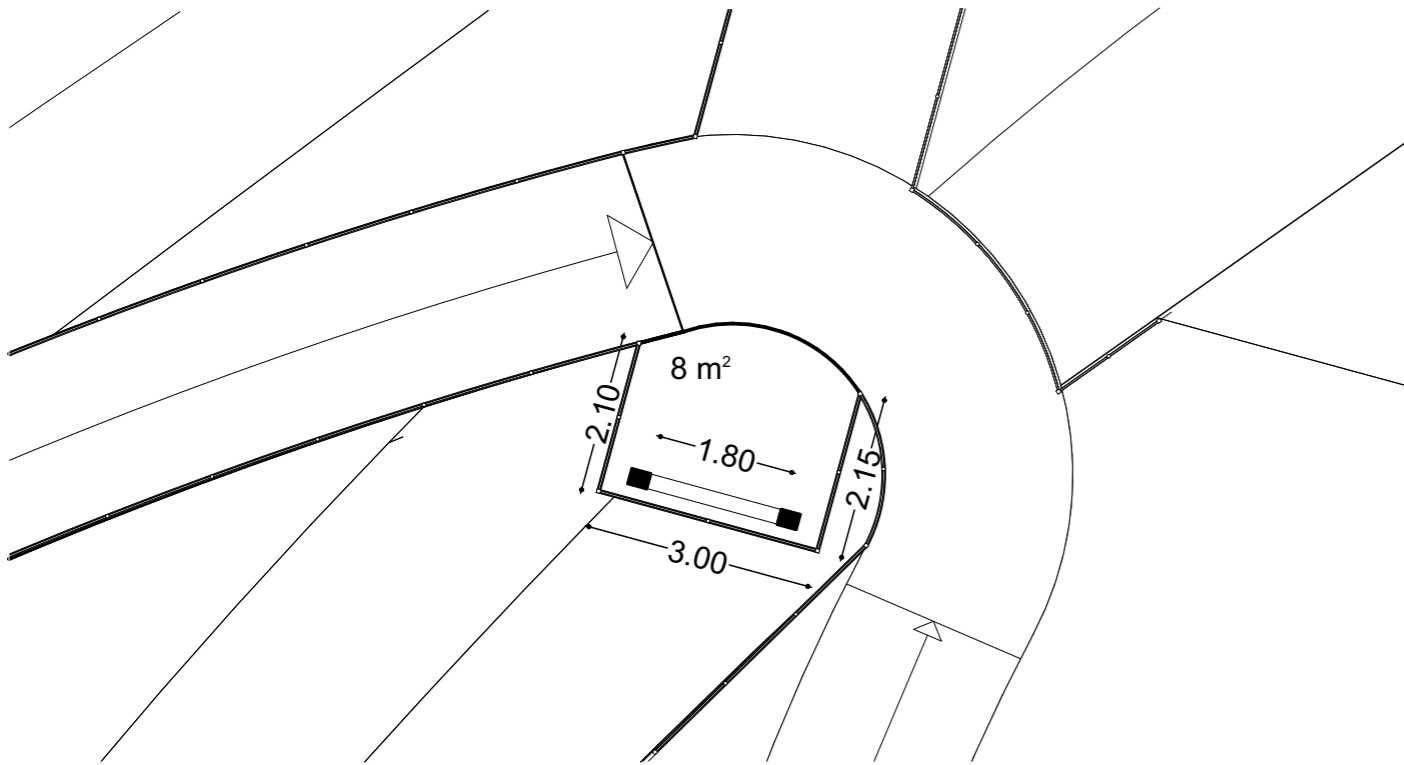
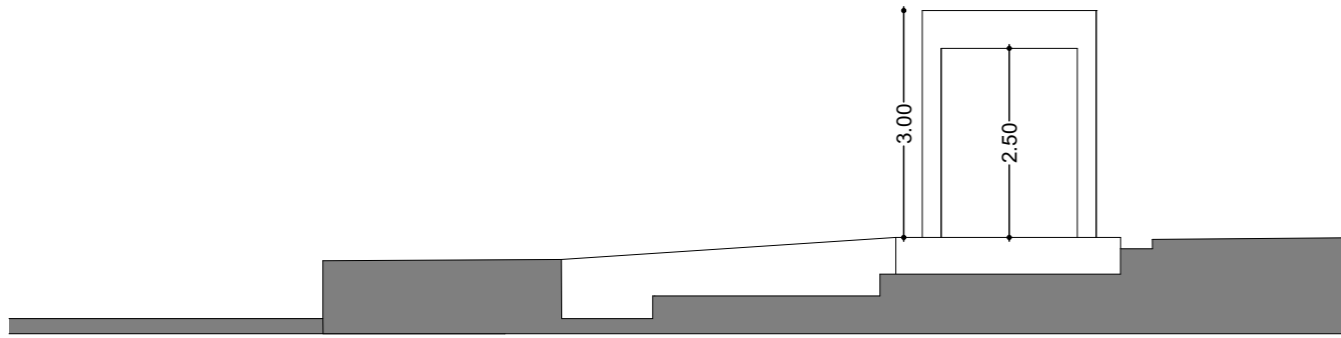
#7
Colombie

#6
Cuba

1:200



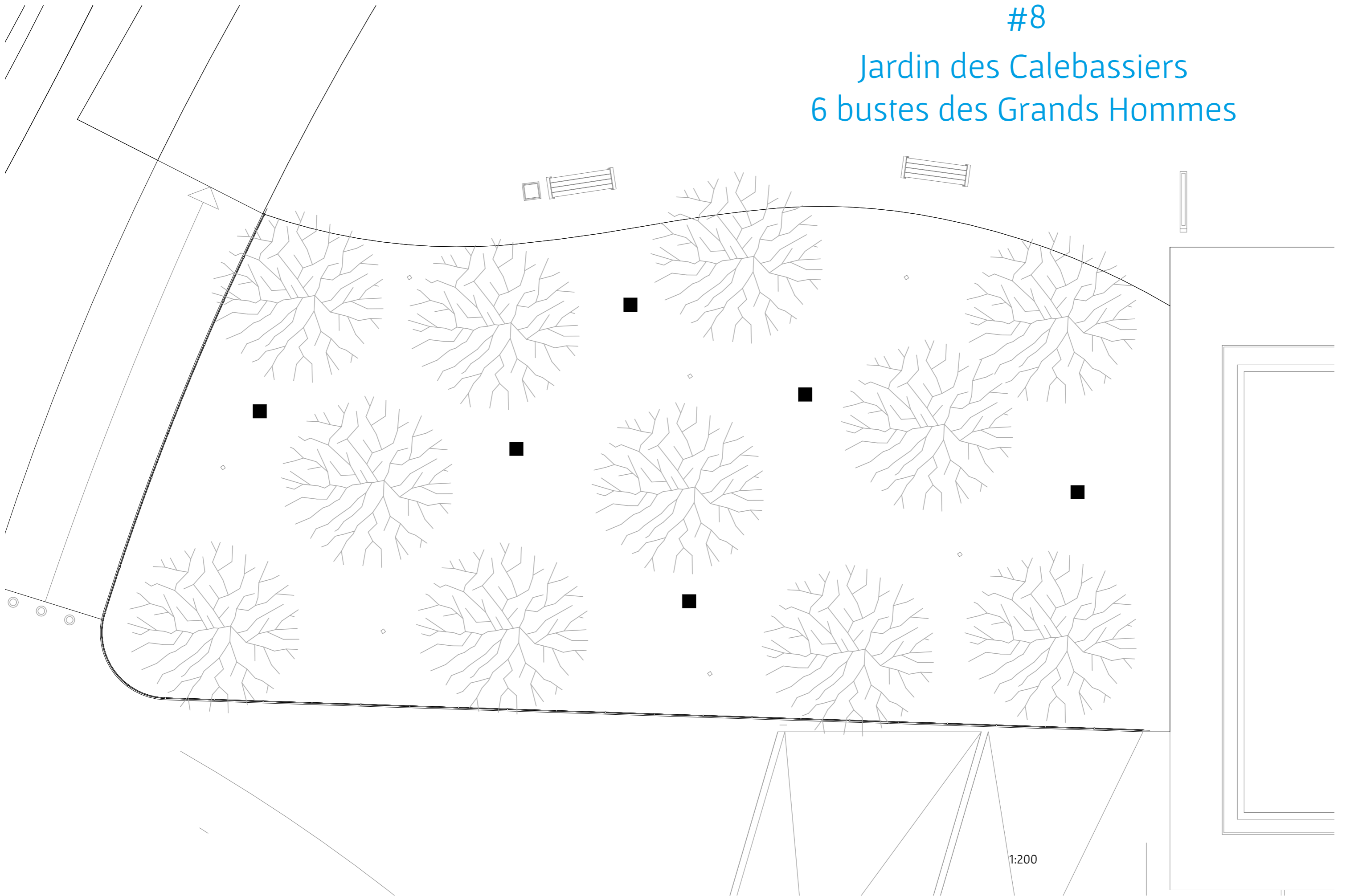
#6
Cuba



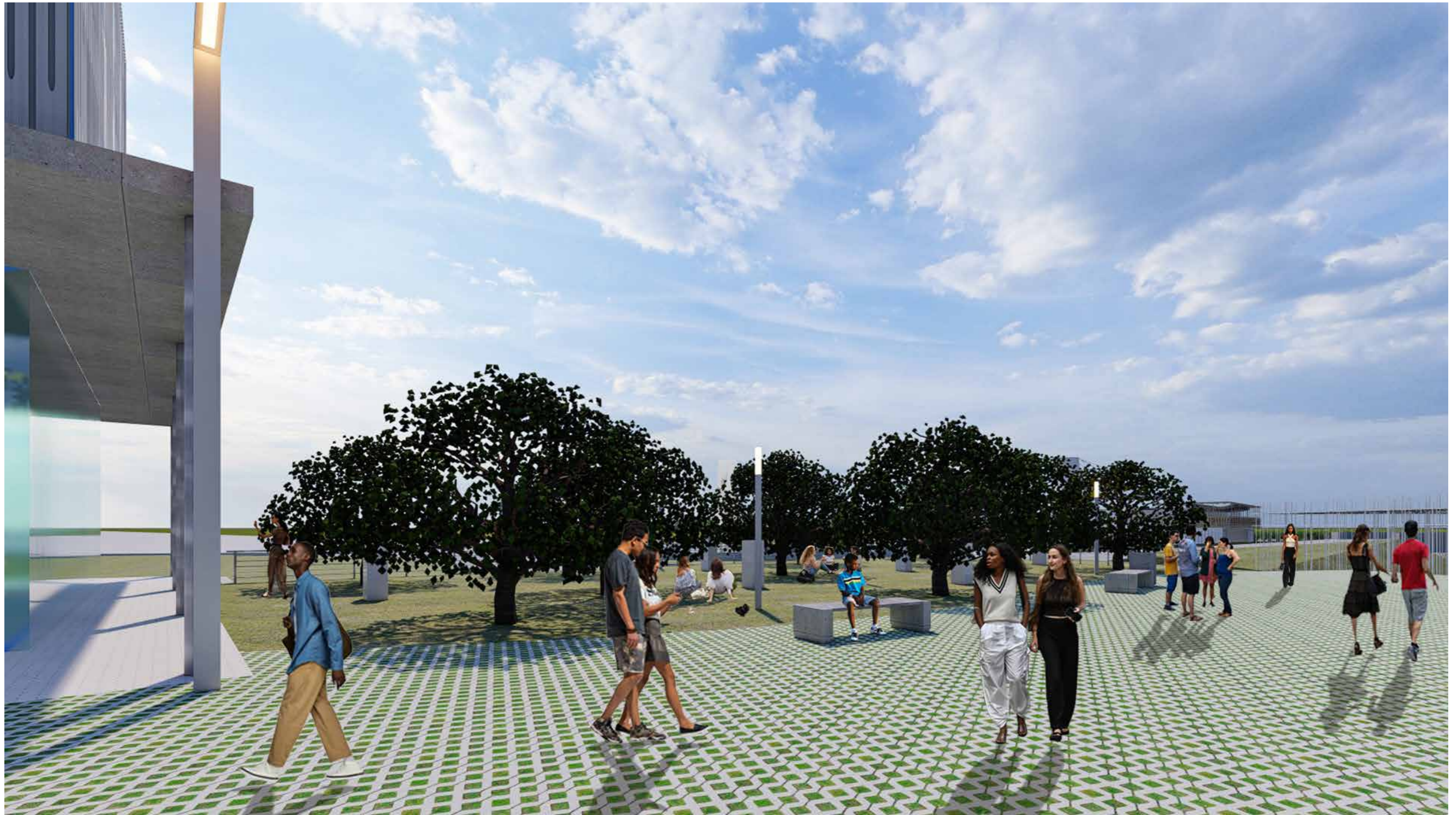
#7
Colombie

#8

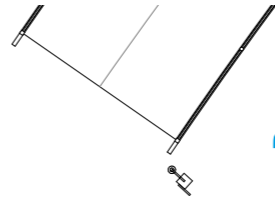
Jardin des Calebassiers
6 bustes des Grands Hommes



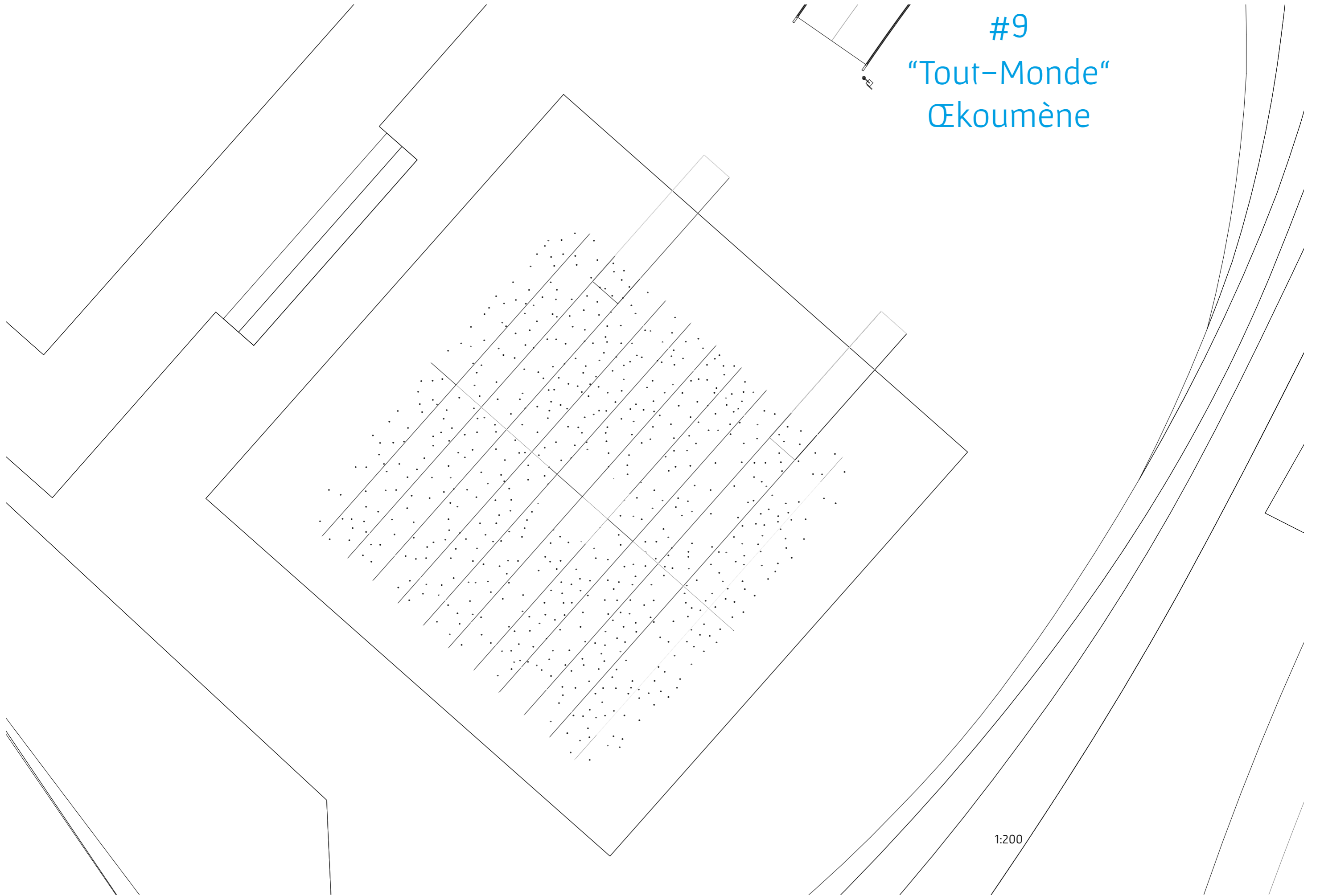
1:200



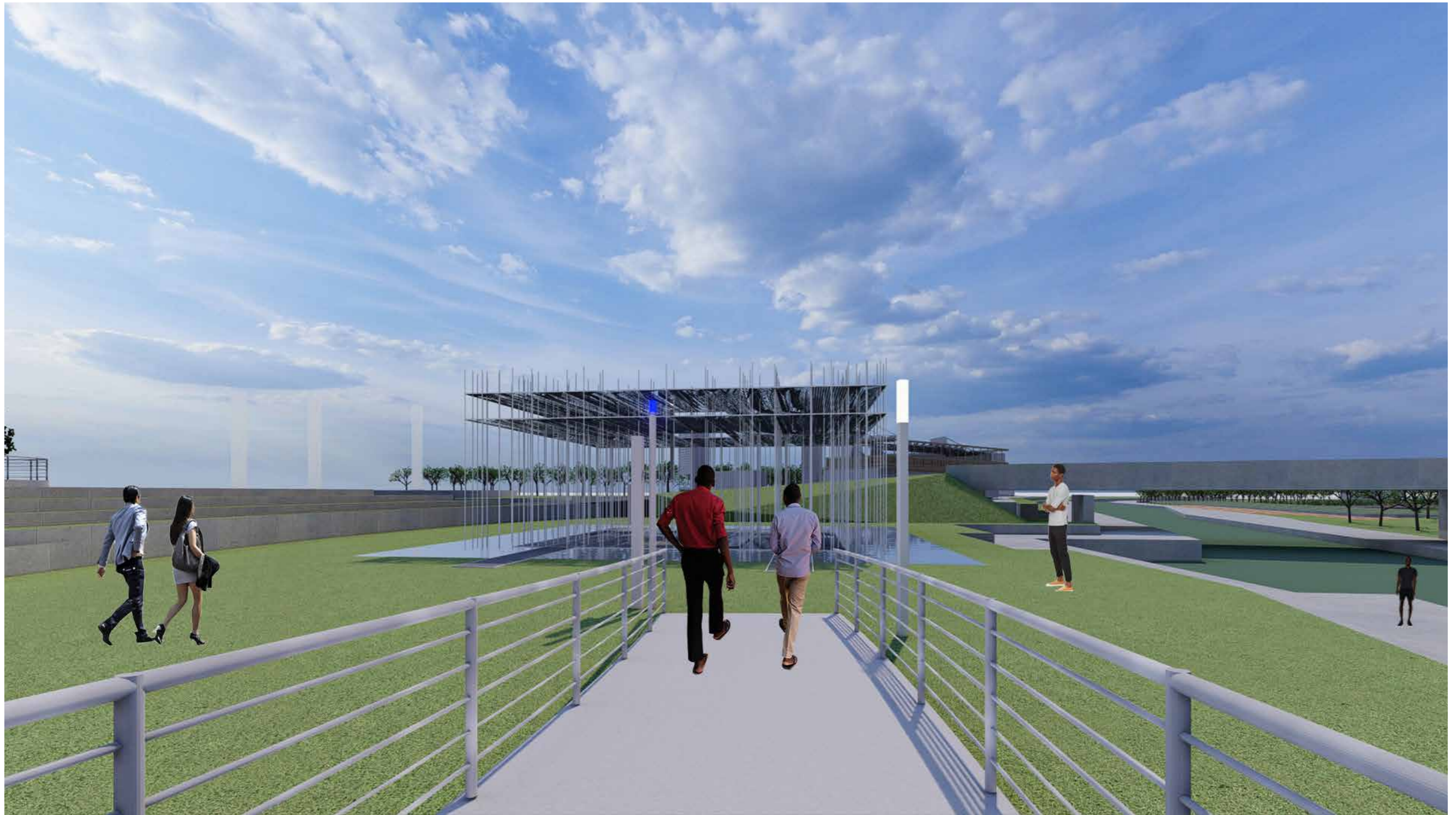
#8
Jardin des Calebassiers



#9
"Tout-Monde"
Œkoumène



1:200



#9
Ækoumène









