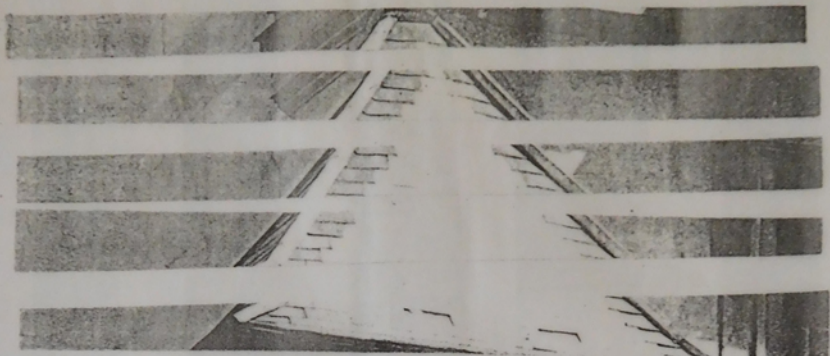
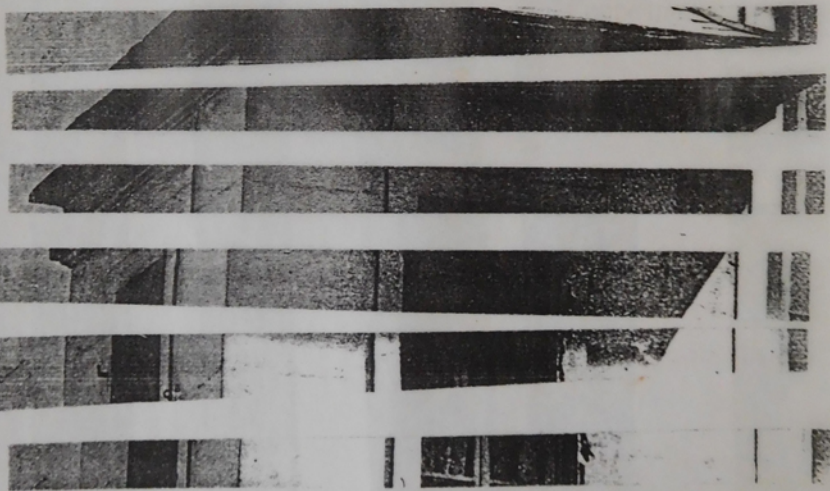


FRAGMENTS 03/98-05 LA PETITE MAISON DANS LE BITUME



CONCEPTION D'UNE GUERITE DE GARDIENNAGE
Zac Bouillé Fort-de-France



CONSEIL GENERAL DE LA MARTINIQUE
DIRECTION GENERALE ADJOINTE CHARGEE DES SERVICES TECHNIQUES ET ECONOMIQUES
SERVICE BATIMENTS ET COLLEGES

CLAUDE YACOB

Architecte

Designer

AVANT-PROJET DETAILLE

SOMMAIRE

EPURES
échelle 1/20

Plan de toiture

Plan intérieur

Coupe longitudinale AB

Coupe transversale CD

Façade 1

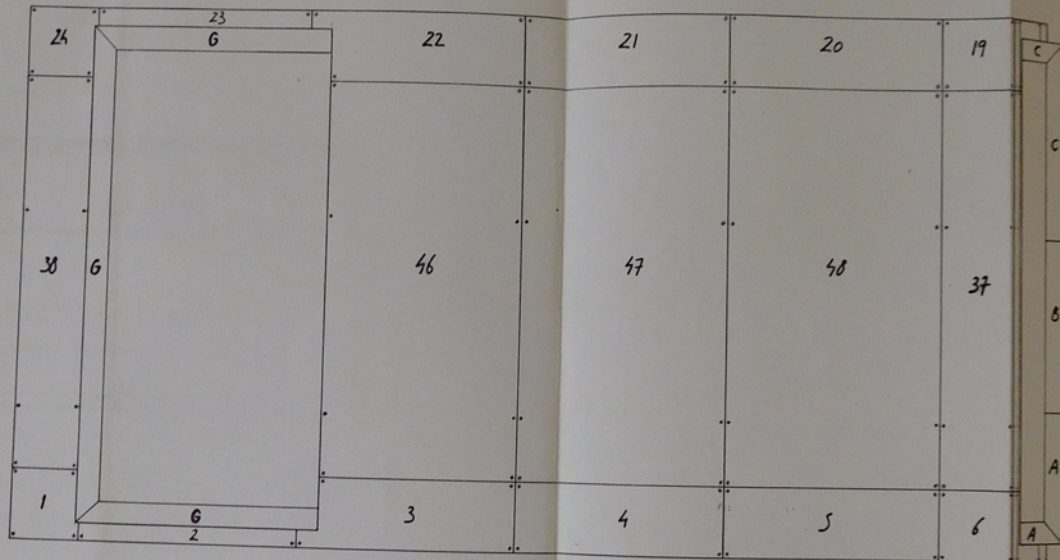
Façade 2

Façade 3

Façade 4

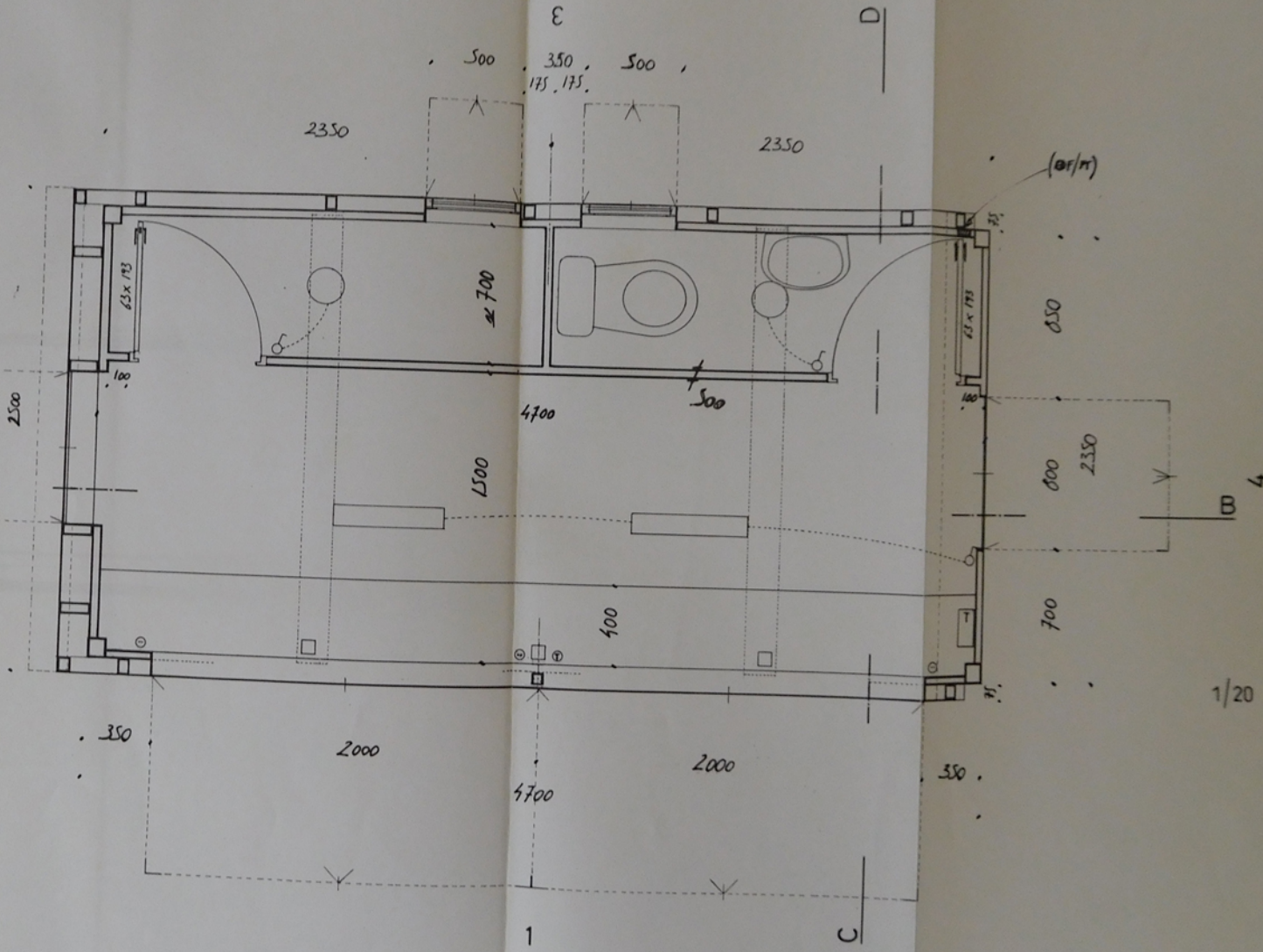
" Dieu est dans le détail... "

Ludwig MIES VAN DER ROHE Aix-la-Chapelle 1886 - Architecte - Chicago 1969

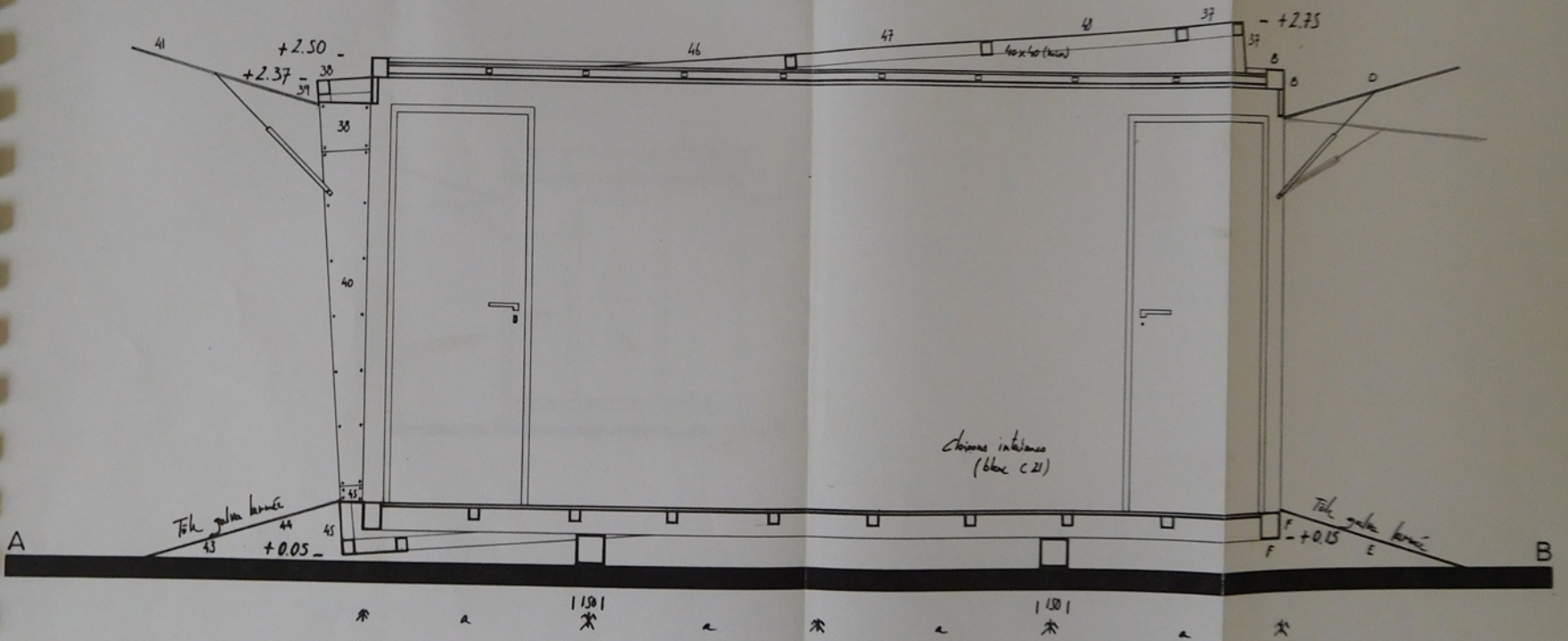
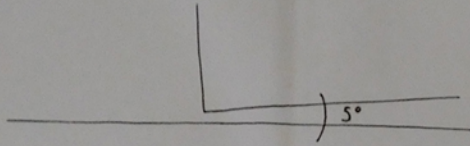


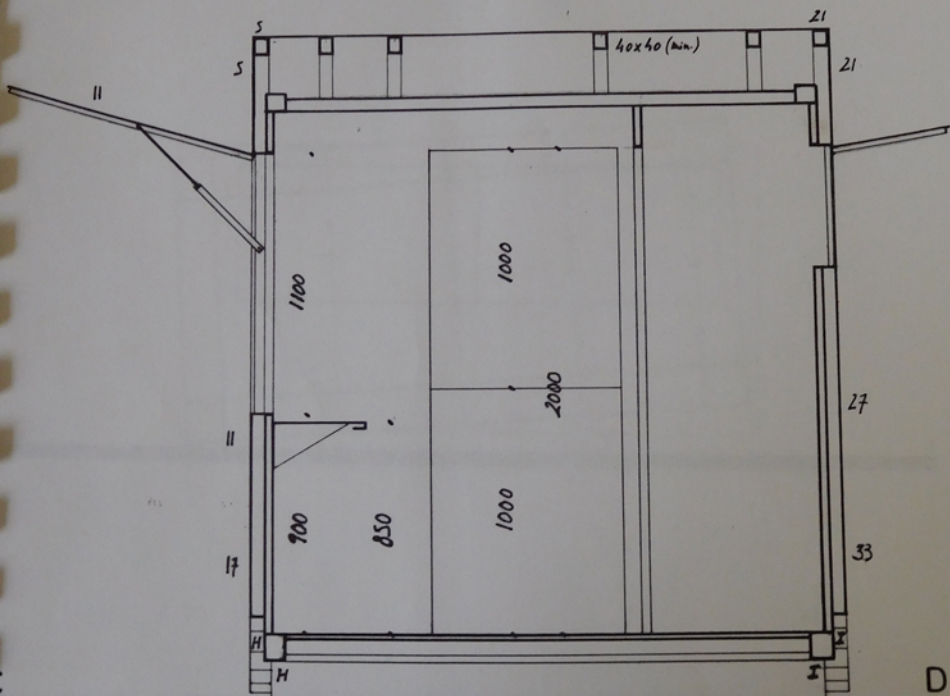
2

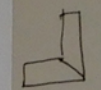
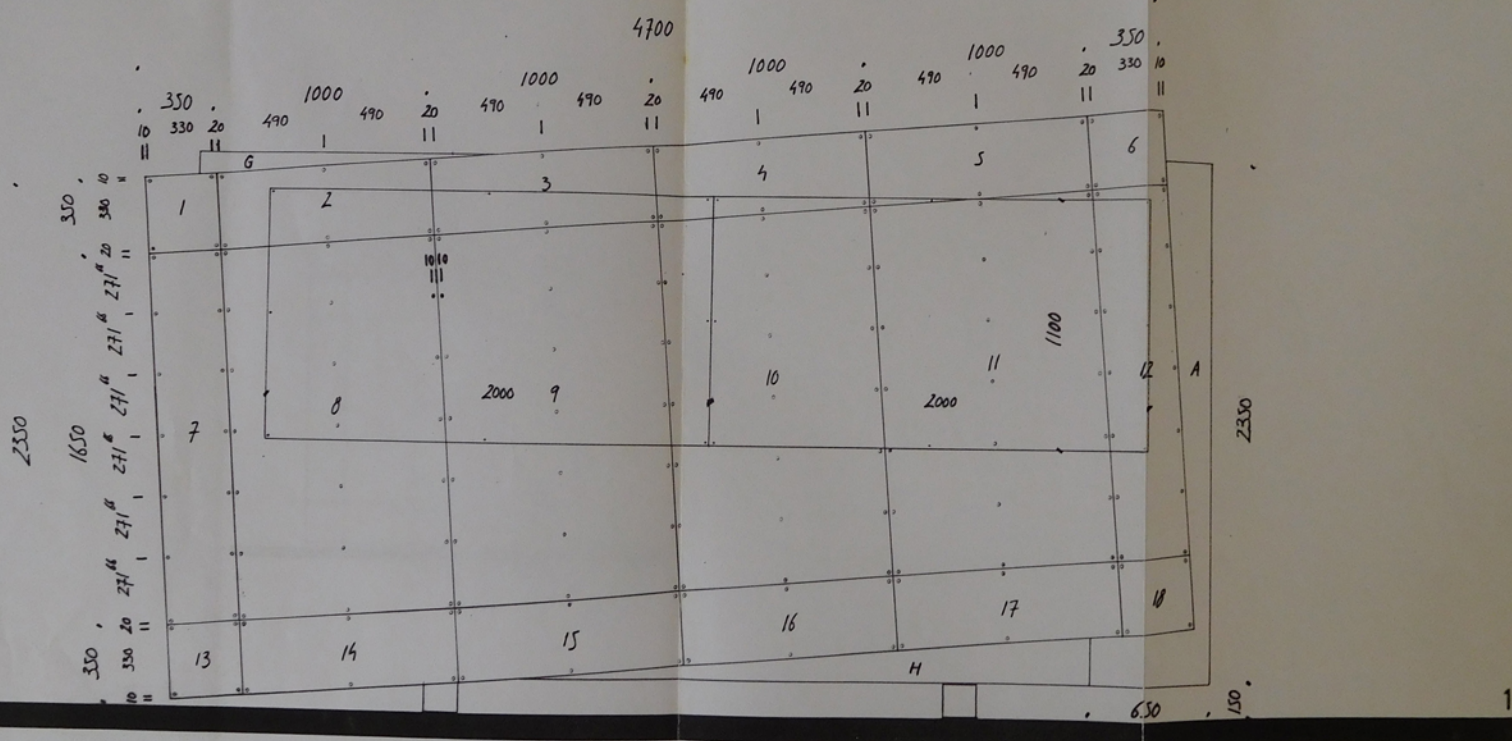
A



1/20

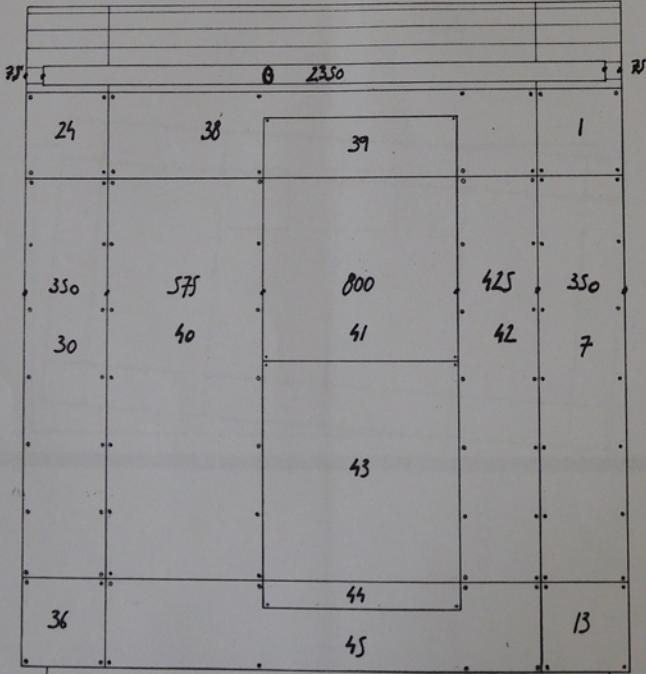




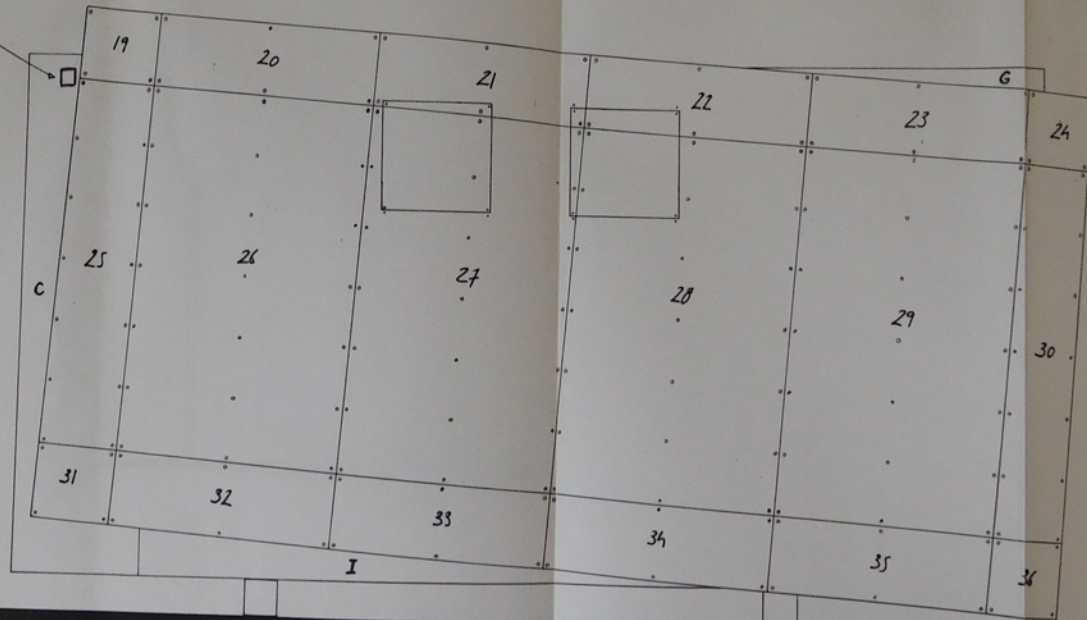


2500

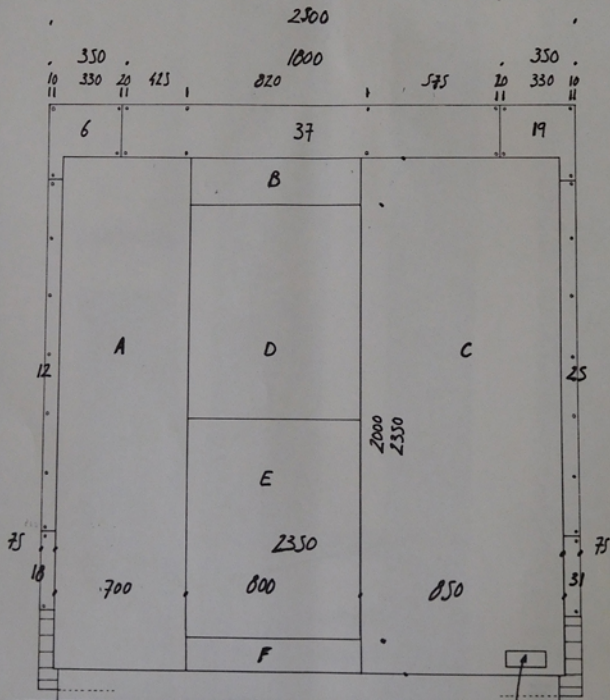
350
10 330 20 555 1800 820 405 20 330 10
|| || | | | | || ||



EDF/FT



- * Tôle ondulée 1 à 40
tente Alu RAL 9006
(Volume incliné)
- * Tôle A à I
tente rouge RAL 3020



plaque métallique route
 SOGACOM
 (unique marquage)

* A confirmer
 empreintes Conseil Général / ADAT !!!